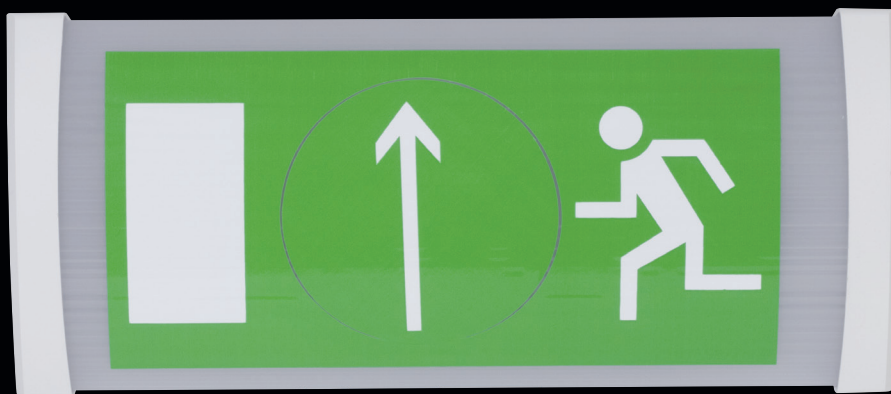


BELTR LED NM



... emergency and orientation.

USE

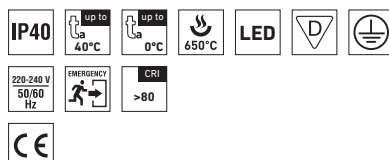
The light fitting is suitable for emergency and orientation illumination of hallways, offices, warehouses.

Non-maintained emergency luminaire for escape routes, available for use in high ambient temperature, $t_a = 40^\circ\text{C}$.

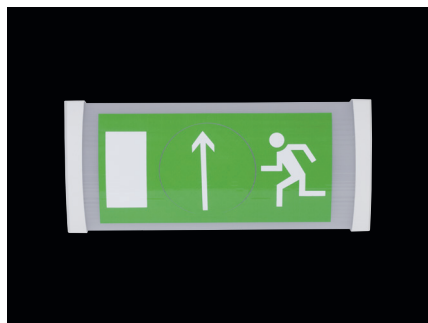
Atmosphere emissions must be considered, as they may reduce the usability of plastics at installation in aggressive environment, see p. 367.

ADVANTAGES

- Light fitting protection **IP40**
- High thermal resistance ranging **from $t_a = 0^\circ\text{C}$ to $t_a = 40^\circ\text{C}$** also for basic Ni-Cd battery type
- LED module lifetime: 50 000 hours / L80B20
- Luminous flux of the light fitting: **440 lm**
- Diffuser: translucent polycarbonate (PC) = high mechanical resistance
- Body: steel sheet, white colour (RAL 9003)
- Emergency module **1h or 3h**
- Optional selection of EM kit with battery autotest
- Integrated diode for indication of correct operation
- Optional selection of battery type between **Ni-Cd** or **LiFePO₄**
- Low energy consumption in StandBy mode

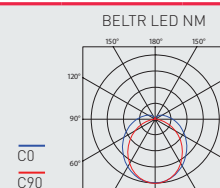
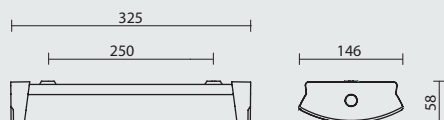


BELTR LED NM, NMA_t



TECHNICAL DESCRIPTION

- Recognizing distance: 25 m
- Light fitting protection: **IP40**
- Maximum ambient temperature: **t_a = 40 °C**
- LED module lifetime: 50 000 hours / L80B20
- Luminous flux of the light fitting: **440 lm**
- Maximum light fitting efficiency: 135 lm/W
- **CRI > 80: 6500 K**
- MacAdam = 3 SDCM
- Diffuser: translucent polycarbonate (PC), UV stable, impact-resistant
- Body: steel sheet, white colour (RAL 9003)
- Cable gland: white, rubber
- Electric equipment:
 - EM kit including Ni-Cd battery without autotest, LED module**
 - EM kit including LiFePO₄ battery with autotest, LED module**
- 1-year warranty for battery, 2-year warranty for EM kit (unit + LED module)
- The above stated values of power consumption and luminous flux are within a tolerance of ± 7,5 %
- Pictogram: optional accessory



Type	Autonomy [hrs]	Luminous flux of light fitting [lm]	Power in emergency mode [W]	Light fitting efficiency [lm/W]	Battery type	Power in standby mode [W]	Charging time [hrs]	Power in charging mode [W]	Net weight [kg]
Non-maintained emergency luminaire without autotest									
BELTR LED 2.1ft NM1h	1	440	4,5	98	Ni-Cd	1,5	24	9	1,2
BELTR LED 2.1ft NM3h	3	440	4,5	98	Ni-Cd	1,5	24	9	1,4
Non-maintained emergency luminaire with autotest									
BELTR LED 2.1ft NM1hAt	1	440	3,3	135	LiFePO ₄	0,7	12	3,5	1,2
BELTR LED 2.1ft NM3hAt	3	440	3,3	135	LiFePO ₄	0,7	12	3,5	1,4

BELTR LED NM, NMA_t

Type	Non-maintained emergency luminaire without autotest	
	NM1h	NM3h
BELTR LED 2.1ft NM	54510	54520
Type	Non-maintained emergency luminaire with autotest	
	NM1hAt	NM3hAt
BELTR LED 2.1ft NMA _t	54530	54540

LEGEND

- NM1h** – non-maintained emergency luminaire, operation time 1 hour
NM3h – non-maintained emergency luminaire, operation time 3 hours
...At – version with battery autotest

Module signalling without autotest

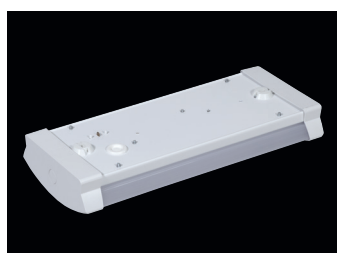
LED colour	Information
● green	
flashing	battery charging
-	running test/emergency mode

Module signalling with autotest (At)

LED colour	Information
● green ● red	
flashing -	battery charging
- flashing	defective LED module
- shining	defective battery
- -	running test/emergency mode

LIGHT FITTING ATTACHMENT

Directly to a ceiling or a wall with the use of screws



LIGHT FITTING DETAILED VIEW

BELTR LED NM, NMA_t



