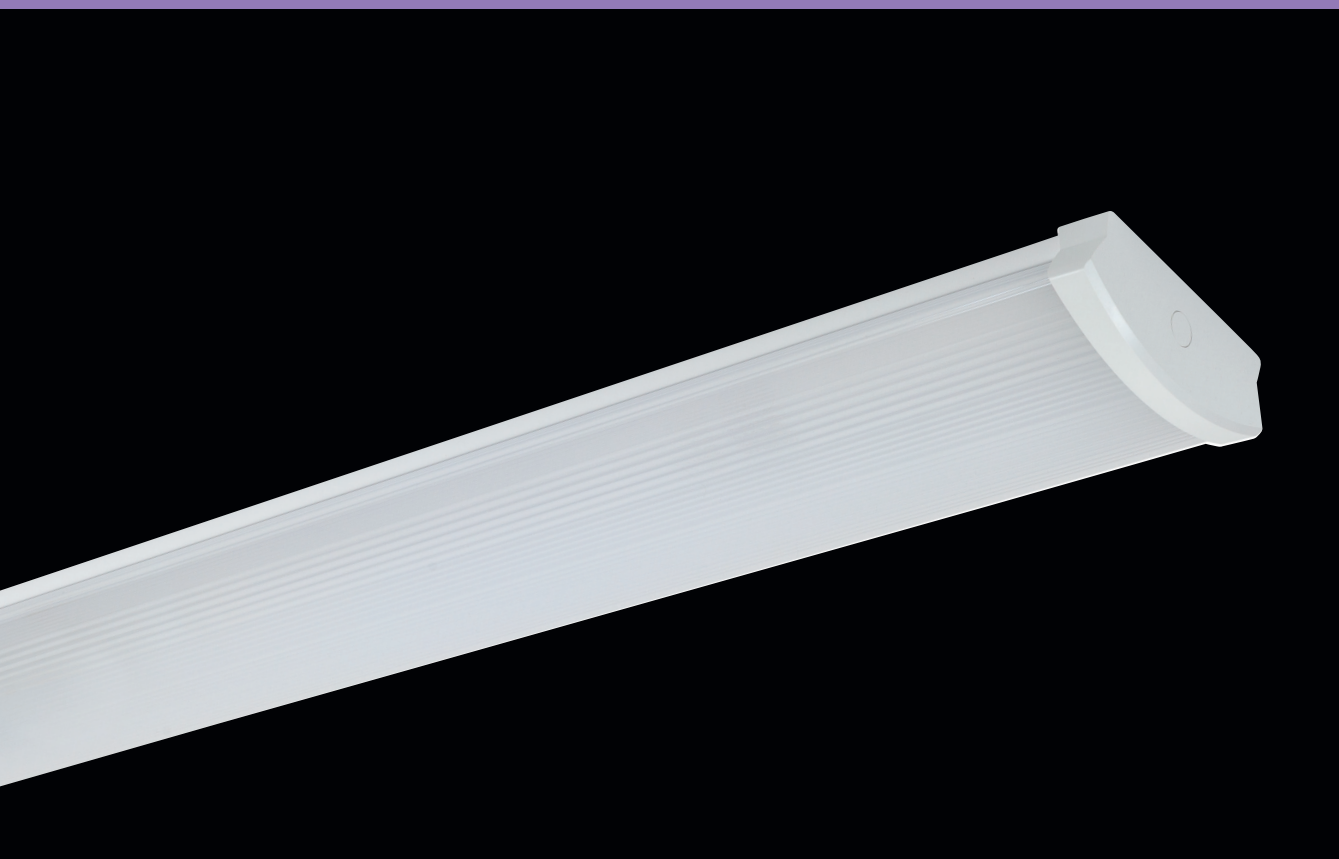


# BELTR LED



... indoor, plastic, surface-mounted, batten.

## USE

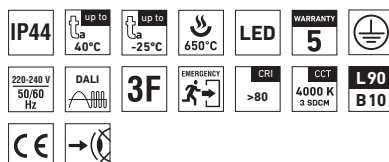
The light fitting is suitable for offices, hallways, school interiors, libraries, lecture rooms, sanitary rooms, hospitals and passenger terminals.

Thanks to its high luminous efficiency and low electricity consumption it is a suitable replacement for light fittings with fluorescent tubes.

## ADVANTAGES

- Light fitting protection **IP44**
- Maximum ambient temperature up to **t<sub>a</sub> = 40 °C**
- Lifetime: 50,000 hours / L90B10
- Diffuser: translucent polycarbonate (PC) = high mechanical resistance
- Body: steel sheet, white colour (RAL 9003)
- Up to 45 % lower electricity consumption when compared to tubes T5
- In DALI version possibility of constant luminous flux for whole lifetime (CLO)

- Standard model - CRI > 80: 4000 K
- At request CRI > 80: 3000 K, 5000 K, 6500 K, CRI > 90: 3000 K, 4000 K, 5000 K, 6500 K
- It can be delivered in dimmable or emergency version
- Possibility to through-wire individual light fittings to row with the use of external terminal blocks
- Certification: CE

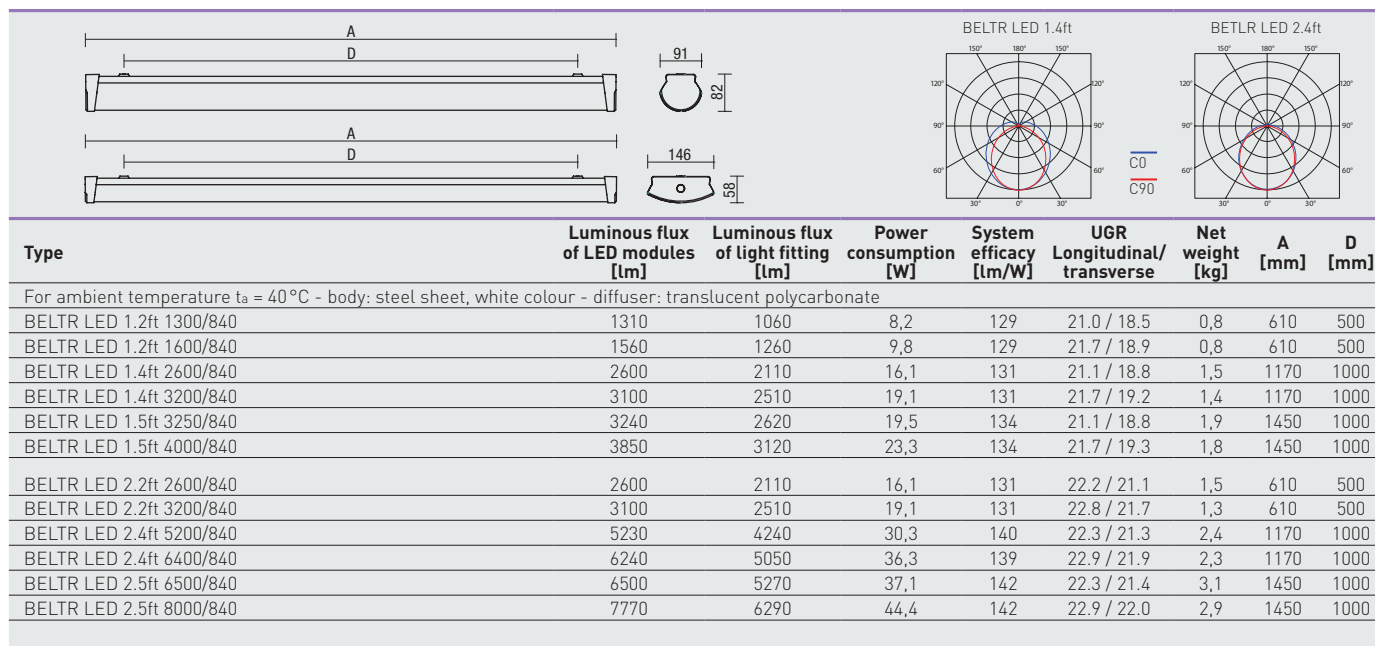


## BELTR LED



## TECHNICAL DESCRIPTION

- Light fitting protection: IP44
- Maximum ambient temperature:  $t_a = 40^\circ\text{C}$ , Maximum ambient temperature:  $t_a = 0-25^\circ\text{C}$  (version with emergency back-up source for 1 hour; M1h)
- Maximum system efficacy: 142 lm/W
- The watt and lumen values can vary by  $\pm 7,5\%$
- Standard model - CRI > 80: 4000 K
- MacAdam = 3 SDCM
- Lifetime: 50,000 hours / L90B10
- Diffuser: translucent polycarbonate (PC), UV stable, impact-resistant
- Body: steel sheet, white colour (RAL 9003)
- Side covers: white (ABS), UV stable, with offsets allowing fixing the light fitting with enclosed screws M4 against tampering
- Cable gland: white, rubber
- Terminal block: screwless, three-pole (basic version)
- Electric equipment: LED modules, current driver or current driver DALI



106917 BELTR LED 1.2ft 1600/840 = suitable replacement for T8 fl. tube light fitting BELTR 118 - 1x18W  
 106919 BELTR LED 1.4ft 3200/840 = suitable replacement for T8 fl. tube light fitting BELTR 136 - 1x36W  
 106921 BELTR LED 1.5ft 4000/840 = suitable replacement for T8 fl. tube light fitting BELTR 158 - 1x58W  
 106923 BELTR LED 2.2ft 3200/840 = suitable replacement for T8 fl. tube light fitting BELTR 218 - 2x18W  
 106925 BELTR LED 2.4ft 6400/840 = suitable replacement for T8 fl. tube light fitting BELTR 236 - 2x36W  
 106927 BELTR LED 2.5ft 8000/840 = suitable replacement for T8 fl. tube light fitting BELTR 258 - 2x58W

## BELTR LED

Kód	Typ	3F	M1h	3F M1h
106916	BELTR LED 1.2ft 1300/840	x	x	x
106917	BELTR LED 1.2ft 1600/840	x	x	x
106918	BELTR LED 1.4ft 2600/840	x	106934	x
106919	BELTR LED 1.4ft 3200/840	x	106935	x
106920	BELTR LED 1.5ft 3250/840	x	106936	x
106921	BELTR LED 1.5ft 4000/840	x	106937	x
106922	BELTR LED 2.2ft 2600/840	106928	x	x
106923	BELTR LED 2.2ft 3200/840	106929	x	x
106924	BELTR LED 2.4ft 5200/840	106930	106938	106942
106925	BELTR LED 2.4ft 6400/840	106931	106939	106943
106926	BELTR LED 2.5ft 6500/840	106932	106940	106944
106927	BELTR LED 2.5ft 8000/840	106933	106941	106945

Example of type marking: 106943 = BELTR LED 2.4ft 6400/840 **3F M1h**

BELTR LED DALI

Code	Type
106946	BELTR LED 1.2ft 1300/840 DALI
106947	BELTR LED 1.2ft 1600/840 DALI
106948	BELTR LED 1.4ft 2600/840 DALI
106949	BELTR LED 1.4ft 3200/840 DALI
106950	BELTR LED 1.5ft 3250/840 DALI
106951	BELTR LED 1.5ft 4000/840 DALI
106952	BELTR LED 2.2ft 2600/840 DALI
106953	BELTR LED 2.2ft 3200/840 DALI
106954	BELTR LED 2.4ft 5200/840 DALI
106955	BELTR LED 2.4ft 6400/840 DALI
106956	BELTR LED 2.5ft 6500/840 DALI
106957	BELTR LED 2.5ft 8000/840 DALI

Digitally dimmable DALI driver

3F	M1h	3F M1h
x	x	x
x	x	x
x	106964	x
x	106965	x
x	106966	x
x	106967	x
106958	x	x
106959	x	x
106960	106968	106972
106961	106969	106973
106962	106970	106974
106963	106971	106975

BELTR LED SNS

Code	Type
106976	BELTR LED 2.2ft SNS 2600/840
106977	BELTR LED 2.2ft SNS 3200/840
106978	BELTR LED 2.4ft SNS 5200/840
106979	BELTR LED 2.4ft SNS 6400/840
106980	BELTR LED 2.5ft SNS 6500/840
106981	BELTR LED 2.5ft SNS 8000/840

Microwave motion sensor

3F	M1h	3F M1h
106982	x	x
106983	x	x
106984	106990	106996
106985	106991	106997
106986	106992	106998
106987	106993	106999

Example of type marking: 106999 = BELTR LED 2.5ft SNS 8000/840 **3F M3h**

LEGEND

- 3F**

3-phase 5 core through-wiring in the luminaire
- M1h**

emergency back-up source with 1 hour operating time for maintained emergency illumination
- 3F Mxh**

3-phase 5 core through-wiring in the luminaire  
(L3 used for emergency unit unswitched power supply)
- DALI**

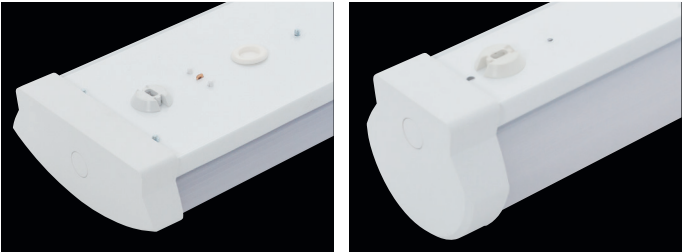
version with digital dimmable driver DALI
- DALI 3F**

3-phase 7 core through-wiring in the luminaire
- DALI 3F Mxh**

3-phase 7 core through-wiring in the luminaire  
(L3 used for emergency unit unswitched power supply)

LIGHT FITTING ATTACHMENT

Directly to a ceiling or a wall with the use of screws



LIGHT FITTING DETAILED VIEW

BELTR LED

