

# CANOPUS HE



**157**  
lm/W



... high efficiency, for high ceilings, with sulphur-resistant LED chips.

## USE

The light fitting is suitable for large operations with high ceilings, industrial outdoor and indoor roofed spaces, warehouses, workshops, sports areas, transport terminals and utility structures without a danger of explosion of gas, dust and combustible fumes.

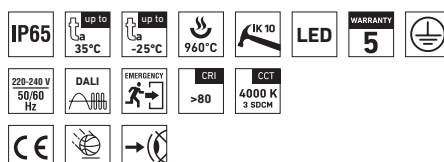
The light fitting is resistant to deformation, dust and splashing water.

Characteristics of the used tempered glass and its shattering power are controlled by the ČSN EN 12150-1 standard. For applications where spontaneous fracture means a higher safety risk, we recommend to use the version with the safety film (SF).

## ADVANTAGES

- Light fitting protection **IP65**
- Maximum ambient temperature up to  **$t_a = 35^\circ\text{C}$**
- Lifetime: 50,000 hours / L90B50
- High mechanical robustness IK10
- Diffuser: satinized or transparent tempered safety glass
- Body: steel sheet - white colour (RAL 9003), or inox AISI 304 at request
- Up to 45 % lower electricity consumption when compared to tubes T5
- Possibility of delivery either in a deemed or permanently emergency design M1hAt and M3hAt

- In DALI version possibility of constant luminous flux for whole lifetime (CLO)
- Constant luminous flux even in ambient temperature of  $-25^\circ\text{C}$
- Standard model - CRI > 80: 4000 K
- Easy installation with the help of supply connector with cable 0,4 m CYSY 3 x 1,5, without necessity of opening the light fitting
- **Chips with high sulphur resistance**
- Certification: BALL-PROOF

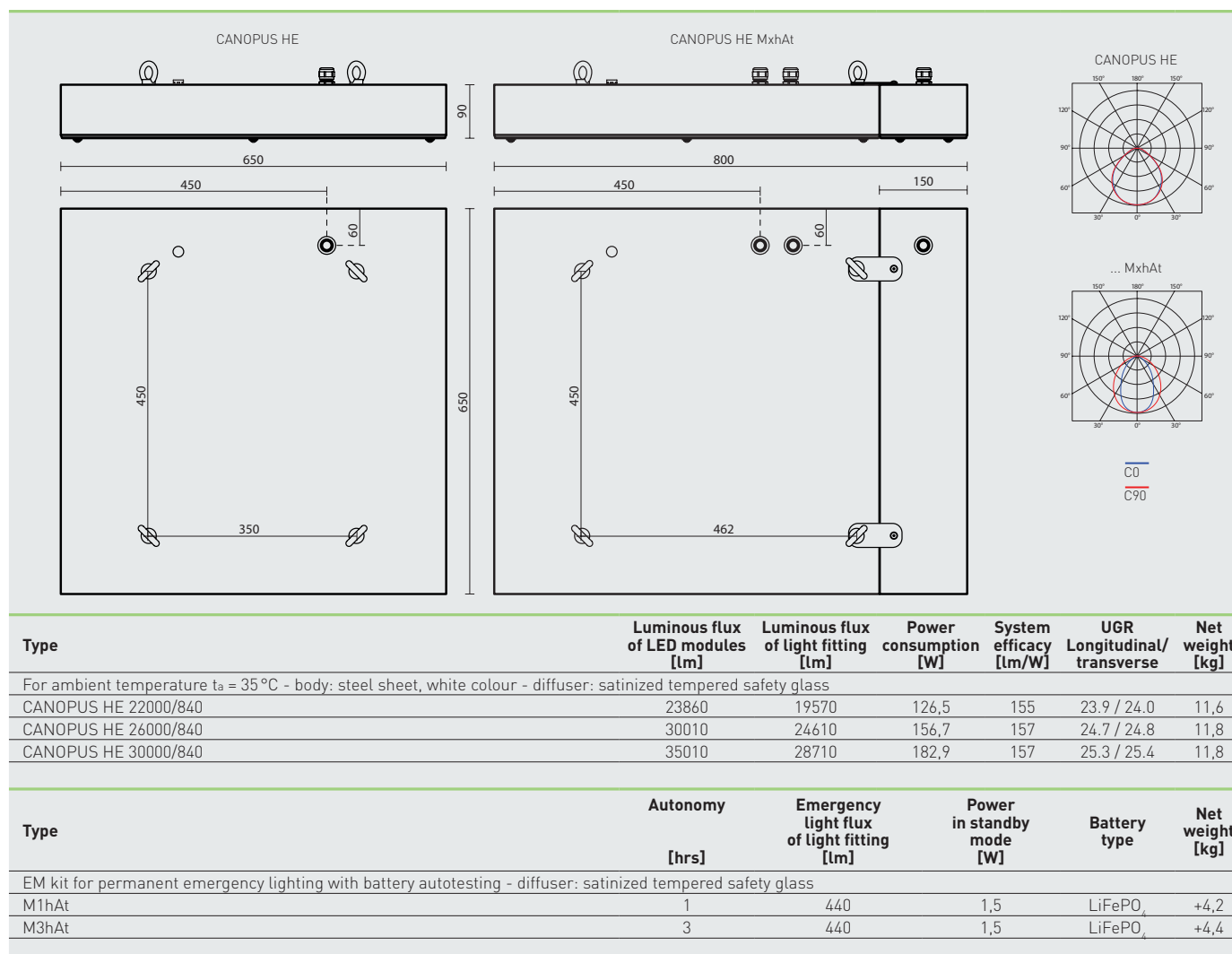


## CANOPUS HE



## TECHNICAL DESCRIPTION

- Light fitting protection: IP65
- Maximum ambient temperature:  $t_a = 0-35^\circ\text{C}$  and for the design with a back-up power supply M1hAt, M3hAt
- Maximum system efficacy: 157 lm/W
- The watt and lumen values can vary by  $\pm 7,5\%$
- Standard model - CRI > 80: 4000 K
- MacAdam = 3 SDCM
- Lifetime: 50,000 hours / L90B50
- Diffuser: satinized tempered safety glass
- Possibility of delivery of the diffuser with a safety foil (SF)
- EM kit with battery autotesting for M1hAt and M3hAt
- Body: steel sheet, white colour (RAL 9003), or inox AISI 304 at request
- Ventilation plug: type BVPB-01 made of polyamide, size M12  $\times$  1.5
- Sealing: EPDM attached to light fitting body
- Terminal block: interconnecting connector, 0.4 m cable
- Installation: all versions delivered including suspension lugs (4 pcs)
- Electric equipment: LED sulphur-resistant modules, current driver or current driver DALI (2 – 3 pcs depending on type)



## CANOPUS HE

Code	Type	M1hAt	M3hAt	DALI	DALI M1hAt	DALI M3hAt
74810	CANOPUS HE 22000/840	74811	74812	74813	74814	74815
74820	CANOPUS HE 26000/840	74821	74822	74823	74824	74825
74830	CANOPUS HE 30000/840	74831	74832	74833	74834	74835

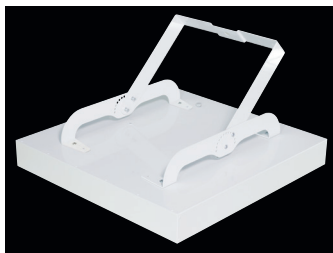
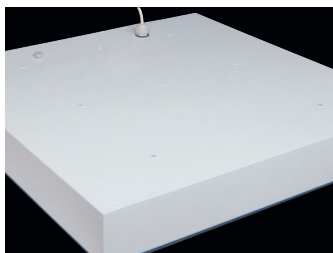
Example of type marking: 74834 = CANOPUS HE 30000/840 DALI M1hAt

## LEGEND

- DALI** – version with digital dimmable driver DALI (2 – 3 pcs)
- M1hAt** – emergency back-up source with operating time of 1 hour [SA] for permanent illumination with battery autotesting
- M3hAt** – emergency back-up source with operating time of 3 hours [SA] for permanent illumination with battery autotesting
- Batteries must be formatted before their putting into operation. Assembly instructions must be observed at installation.

**LIGHT FITTING ATTACHMENT**

- a) With help of suspension eyes of M6
- b) With help of a holder directly to the ceiling
- c) With the help of adjustable holder directly on the ceiling or on the wall
- d) With help of a chain hinge

**LIGHT FITTING DETAILED VIEW****LIGHT FITTING DETAILED VIEW WITH AN EMERGENCY MODULE**