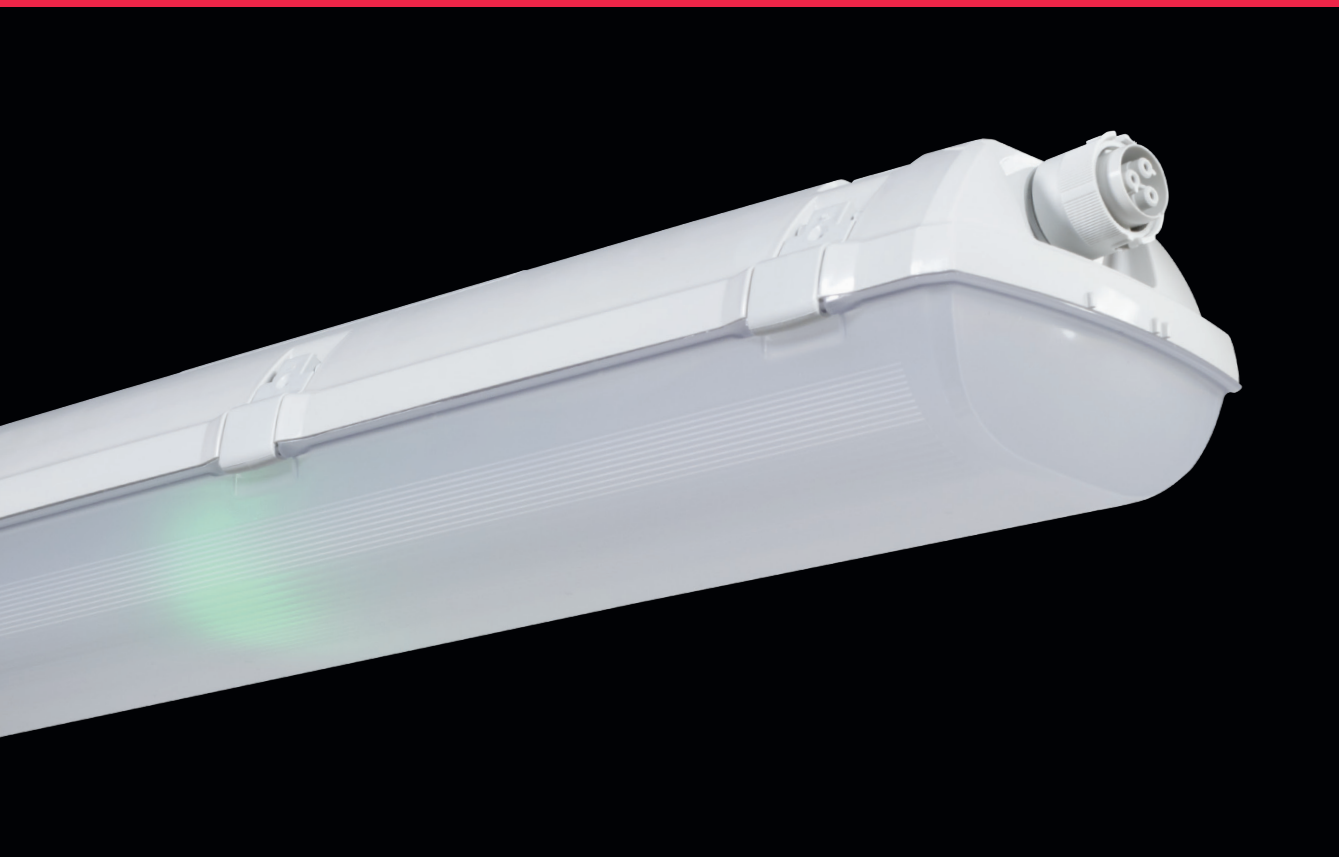


FUTURA NM



... emergency.

USE

Non-maintained emergency luminaire for escape routes, available for use in high ambient temperature, $t_a = 50^\circ\text{C}$, is intended by its function and shape primarily for being in a set with Futura and Innova light fittings.

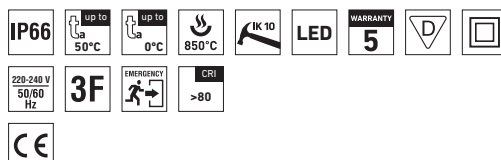
It is recommended for escape routes of interior industrial rooms, storage halls, sports premises, agricultural buildings and laboratories without hazard of explosion of gases, dusts and flammable vapours.

It is resistant to dust, moisture and spouting water. The body and the diffuser made of polycarbonate (PC) have increased resistance against deformation and impact.

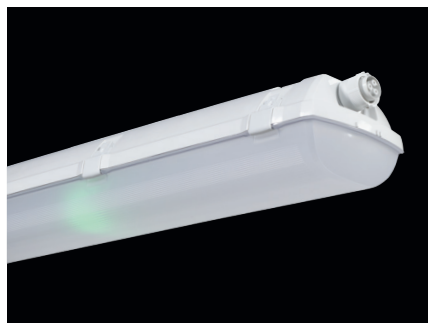
Atmosphere emissions must be considered, as they may reduce the usability of plastics at installation in aggressive environment, see p. 367.

ADVANTAGES

- Light fitting protection **IP66**
- High thermal resistance ranging **from $t_a = 0^\circ\text{C}$ to $t_a = 50^\circ\text{C}$** also for basic Ni-Cd battery type
- LED module lifetime: 50 000 hours / L80B20
- Luminous flux of the light fitting: **440 lm**
- Diffuser: translucent polycarbonate (PC) = high mechanical resistance
- Body: grey polycarbonate (PC) = high mechanical resistance
- Emergency module **1h or 3h**
- Optional selection of EM kit with battery autotest
- Integrated diode for indication of correct operation
- Optional selection of battery type between **Ni-Cd or LiFePO₄**
- Low energy consumption in StandBy mode
- Optional selection of connection between **cable gland or connector**
- Insulation class II

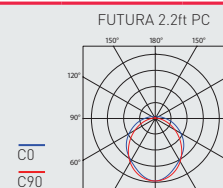
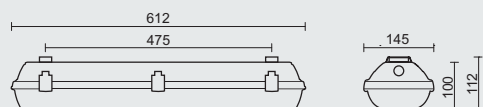


FUTURA PC, PCc



TECHNICAL DESCRIPTION

- Light fitting protection: **IP66**
- Maximum ambient temperature: **t_a = 50 °C**
- LED module lifetime: 50 000 hours / L80B20
- Luminous flux of the light fitting: **440 lm**
- Maximum light fitting efficiency: 133 lm/W
- **CRI > 80: 6500 K**
- MacAdam = 3 SDCM
- Diffuser: translucent PC (high mechanical resistance, UV stability)
- Body: grey PC (high mechanical resistance, UV stability)
- Reflector: white steel sheet (RAL 9003)
- Clips: polyamide + 15 % glass fibre or stainless steel + polyamide
- Sealing: polyurethane (PUR), foam-filled body groove
- Light fitting connection: **cable gland PG 13,5 / 16** or **connector**
- Distance holder: polyamide + 10 % glass fibre
- Electric equipment:
EM kit including Ni-Cd battery without autotest, LED module
EM kit including LiFePO₄ battery with autotest, LED module
- The package includes: stainless hooks and stainless brackets
- 1-year warranty for battery, 2-year warranty for EM kit (unit + LED module)
- The above stated values of power consumption and luminous flux are within a tolerance of $\pm 7,5 \%$



Type	Autonomy [hrs]	Luminous flux of light fitting [lm]	Power in emergency mode [W]	Light fitting efficiency [lm/W]	Battery type	Power in standby mode [W]	Charging time [hrs]	Power in charging mode [W]	Net weight [kg]
Non-maintained emergency luminaire without autotest									
FUTURA 2.2ft PC NM1h	1	440	4,5	98	Ni-Cd	1,5	24	9	1,2
FUTURA 2.2ft PC NM3h	3	440	4,5	98	Ni-Cd	1,5	24	9	1,4
Non-maintained emergency luminaire with autotest									
FUTURA 2.2ft PC NM1hAt	1	440	3,3	133	LiFePO ₄	0,7	12	3,5	1,2
FUTURA 2.2ft PC NM3hAt	3	440	3,3	133	LiFePO ₄	0,7	12	3,5	1,4

FUTURA PC with cable glands		Non-maintained emergency luminaire without autotest - cable glands PG 13,5 / 16 - plastic clips			
Type		NM1h	3F NM1h	NM3h	3F NM3h
FUTURA 2.2ft PC ...		62410	62411	62413	62414
		Non-maintained emergency luminaire with autotest - cable glands PG 13,5 / 16 - plastic clips			
Type		NM1hAt	3F NM1hAt	NM3hAt	3F NM3hAt
FUTURA 2.2ft PC ...		62420	62421	62423	62424

FUTURA PC with cable glands		Non-maintained emergency luminaire without autotest - cable glands PG 13,5 / 16 - stainless clips (c)			
Type		NM1h	3F NM1h	NM3h	3F NM3h
FUTURA 2.2ft PCc ...		62430	62431	62433	62434
		Non-maintained emergency luminaire with autotest - cable glands PG 13,5 / 16 - stainless clips (c)			
Type		NM1hAt	3F NM1hAt	NM3hAt	3F NM3hAt
FUTURA 2.2ft PCc ...		62440	62441	62443	62444

LEGEND

- NM1h** – non-maintained emergency luminaire, operation time 1 hour
3F NM1h – non-maintained emergency luminaire, operation time 1 hour, 5-wire throughwiring (3F)
NM3h – non-maintained emergency luminaire, operation time 3 hours
3F NM3h – non-maintained emergency luminaire, operation time 3 hours, 5-wire throughwiring (3F)
...At – version with battery autotest

Module signalling without autotest

LED colour	Information
● green	
flashing	battery charging
-	running test/emergency mode

Module signalling with autotest (At)

LED colour	Information
● green ● red	
flashing -	battery charging
- flashing	defective LED module
- shining	defective battery
- -	running test/emergency mode

LIGHT FITTING ATTACHMENT

- a) Directly to a ceiling or a wall with the use of screws and stainless brackets
- b) Suspension with the use of stainless hooks

**LIGHT FITTING DETAILED VIEW**

FUTURA PC

