

INNOVA NB



BIM
ready

... impact-resistant, for areas with high ceilings of 8 – 12 m.

USE

Closed and non-dismountable light fitting according to the standard ČSN EN 60598-1 part 4 **with Narrow Beam** optics suitable for inside and outside spaces (even without shelter) intended for suspension height from 8 to 12 m, e.g. **inside or outside walls and corridors of high industrial, agricultural, warehouse or sports buildings, rack aisles in warehouses, outdoor playgrounds, covered sports arenas**. The structural design of the light fitting (IP69) allows even placement in food-processing industry - HACCP.

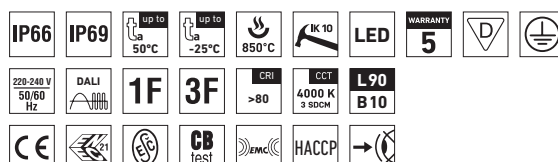
The light fitting resists dust, humidity and washing with spouting water up to 80°C. The body and the diffuser made of PC material have high mechanical resistance against impact and deformation.

An external terminal strip makes it easy and quick to connect the supply cable with no need to open the **fitting (PLUG and PLAY system)**.

Emissions in the environment of use may reduce the usability of the plastics; for more information see page 367.

ADVANTAGES

- Light fitting protection **IP66 / IP69**
- High temperature resistance in a range from $t_a = -25^{\circ}\text{C}$ to $t_a = 45^{\circ}\text{C}$
- Lifetime: 50 000 hours / L90B10
- High mechanical resistance IK10
- **Narrow Beam (NB)**, ceiling height 8 to 12 m
- **Variable suspension pitch**; optional installation of light fitting even on an existing structure on which the original light fittings were suspended
- **External terminal strip makes it easy to connect the supply cable – PLUG and PLAY system**
- Optional arrangement of light fittings in line without gaps
- **Fully automatic 100% control of functionality and tightness (leak test) during production**
- Easy cleaning and maintenance without need of replacing the light sources
- Eliminated risk of mechanical and electrostatic damage to LED chips
- Optional throughwiring (up to 5 wires inside the light fitting)
- Optional delivery in dimmable version
- Certificates: **ESĚ, ENEC, CB, HACCP**

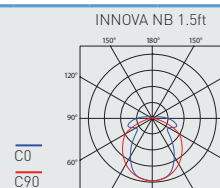
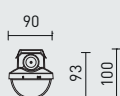
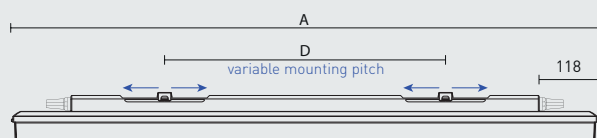


INNOVA NB PC



TECHNICAL DESCRIPTION

- Light fitting protection: **IP66 / IP69**
- Maximum ambient temperature: **t_a = 45 °C**
- Lifetime: 50 000 hours / L90B10
- Maximum light fitting efficiency: 153 lm/W
- CRI > 80: 4000 K – standard
- CRI > 80: 3000 K, 5000 K, 6500 K – on request
- CRI > 90: 3000 K, 4000 K, 5000 K, 6500 K – on request
- MacAdam = 3 SDCM
- Diffuser: transparent PC with Fresnel lenses, **Narrow Beam** (high mechanical resistance, UV stability)
- Body: grey PC (high mechanical resistance, UV stability)
- Snap-in mounting clips: stainless steel
- Ventilation membrane in the base eliminating vacuum and condensate build-up
- 3 or 5-pole **external terminal strip**, conductor cross-sectional area: 1.5 or 2.5 mm²
- Fittings may be **lined with zero distance** between them Optional constant luminous flux (CLO) in DALI version
- Electric equipment: LED modules, fixed output driver or DALI driver
- The package includes: stainless hooks and stainless brackets
- The values stated for power consumption and luminous flux are in a tolerance of ± 7,5 %



| Type | Max. ambient temperature [°C] | Luminous flux of LED modules [lm] | Luminous flux of light fitting [lm] | Power consumption [W] | System efficacy [lm/W] | UGR Longitudinal/transverse | Net weight [kg] | A [mm] | D [mm] |
|---|-------------------------------|-----------------------------------|-------------------------------------|-----------------------|------------------------|-----------------------------|-----------------|--------|-----------|
| Up to ambient temperature t _a = 45 °C - body: grey polycarbonate - diffuser with Fresnel lenses, NB (Narrow Beam), transparent polycarbonate | | | | | | | | | |
| INNOVA 1.4ft NB PC 4400/840 | 45 | 4300 | 3740 | 26,0 | 144 | 25.1 / 19.8 | 1,5 | 1170 | 420 - 700 |
| INNOVA 1.4ft NB PC 6400/840 | 45 | 6120 | 5320 | 36,1 | 147 | 26.4 / 21.1 | 1,5 | 1170 | 420 - 700 |
| INNOVA 1.5ft NB PC 5500/840 | 45 | 5340 | 4650 | 31,9 | 146 | 25.2 / 19.9 | 1,8 | 1450 | 700 - 980 |
| INNOVA 1.5ft NB PC 8000/840 | 45 | 7780 | 6770 | 44,3 | 153 | 26.5 / 21.2 | 1,8 | 1450 | 700 - 980 |

INNOVA NB

Diffuser with Fresnel lenses, Narrow Beam, transparent polycarbonate

| Type | 1x3P | 1x5P | DALI 1x5P | 2x3P | 2x5P | DALI 2x5P |
|--------------------------------|-------|-------|-----------|-------|-------|-----------|
| INNOVA 1.4ft NB PC 4400/840... | 72211 | 72212 | 72213 | 72215 | 72216 | 72217 |
| INNOVA 1.4ft NB PC 6400/840... | 72221 | 72222 | 72223 | 72225 | 72226 | 72227 |
| INNOVA 1.5ft NB PC 5500/840... | 72231 | 72232 | 72233 | 72235 | 72236 | 72237 |
| INNOVA 1.5ft NB PC 8000/840... | 72241 | 72242 | 72243 | 72245 | 72246 | 72247 |

Example of type marking: 72223 = INNOVA 1.4ft NB PC 6400/840 **DALI 1x5P**

LEGEND

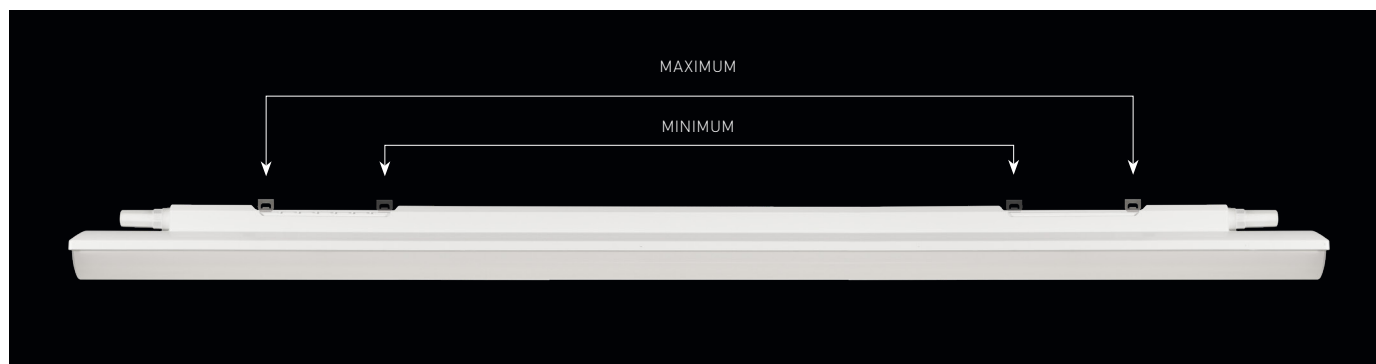
- 1x3P** - a version featuring a non-dimmable ballast and a single 3-pole external terminal strip
- 1x5P** - a version featuring a non-dimmable ballast and a single 5-pole external terminal strip
- DALI 1x5P** - a version featuring a digitally dimmable ballast and a single 5-pole external terminal strip
- 2x3P** - a version featuring a non-dimmable ballast, two 3-pole external terminal strips and 3-wire connecting cables (1F), for continuous row installation
- 2x5P** - a version featuring a non-dimmable ballast, two 5-pole external terminal strips and 5-wire connecting cables (3F), for continuous row installation
- DALI 2x5P** - a version featuring a digitally dimmable ballast, two 5-pole external terminal strips and 5-wire connecting cables (DALI 1F), for continuous row installation

LIGHT FITTING ATTACHMENT

- a) Directly to a ceiling or a wall with the use of screws and stainless brackets
- b) Suspension with the use of stainless hooks
- c) Attachment with the use of side hangers to the wall - is not included in accessories



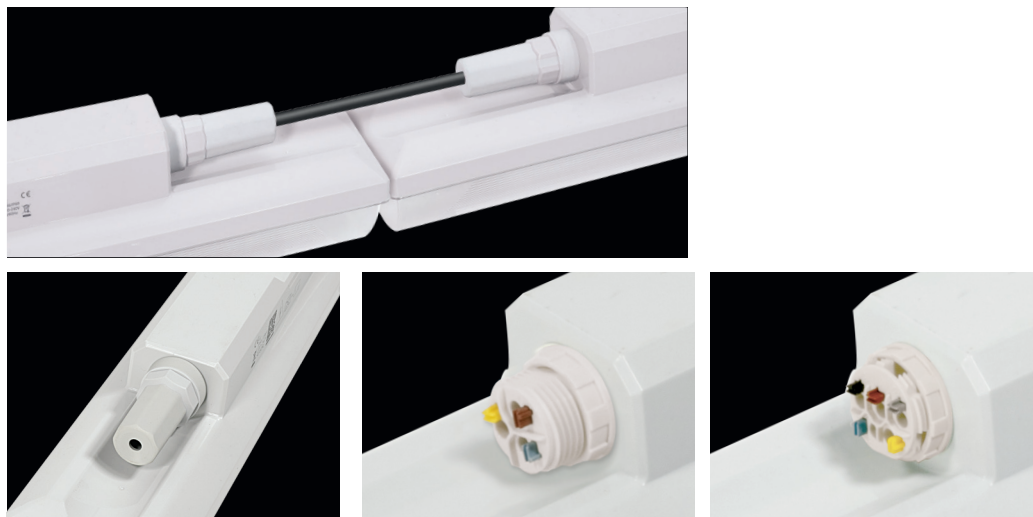
VARIABLE INSTALLATION PITCH



LIGHT FITTING INTERCONNECTION

An external terminal strip is used to ensure the supply cable can easily and quickly be connected with no need to open the light fixture (PLUG and PLAY system)

Interconnection of light fittings without spacing



LIGHT FITTING DETAILED VIEW

INNOVA NB

