

INNOVA



BIM
ready

... dustproof, waterproof and impact-resistant.

USE

Closed and non-dismountable light fitting according to the standard ČSN EN 60598-1 part 4 suitable for indoor and outdoor space (even without shelter), **industrial, warehouse and agricultural buildings, sports premises, transport terminals, parking lots and garages, workshops and laboratories** without explosion hazard. The structural design of the light fitting (IP69) allows even placement in food-processing industry - HACCP.

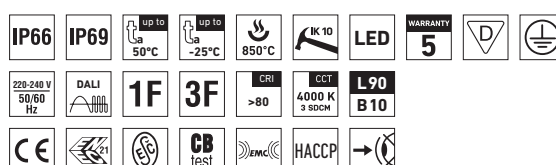
The light fitting resists dust, humidity and washing with spouting water up to 80°C. The body and the diffuser made of PC material have high mechanical resistance against impact and deformation.

An external terminal strip makes it easy and quick to connect the supply cable with no need to open the **fitting (PLUG and PLAY system)**.

Emissions in the environment of use may reduce the usability of the plastics; for more information see page 367.

ADVANTAGES

- Light fitting protection **IP66 / IP69**
- High temperature resistance in a range from $t_a = -25^{\circ}\text{C}$ to **$t_a = 50^{\circ}\text{C}$**
- Lifetime: 50 000 hours / L90B10
- High mechanical resistance IK10
- Variable suspension pitch; optional installation of light fitting even on an existing structure on which the original light fittings were suspended
- **External terminal strip makes it easy to connect the supply cable – PLUG and PLAY system**
- Optional arrangement of light fittings in line without gaps
- Fully automatic 100% control of functionality and tightness (leak test) during production
- Easy cleaning and maintenance without need of replacing the light sources
- Eliminated risk of mechanical and electrostatic damage to LED chips
- Optional throughwiring (up to 5 wires inside the light fitting)
- Optional delivery in dimmable version
- Certificates: **ESĚ, ENEC, CB, HACCP**

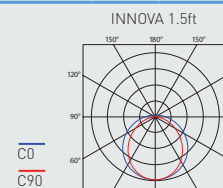
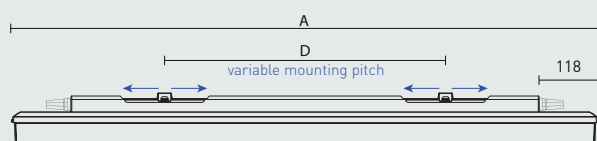


INNOVA PC



TECHNICAL DESCRIPTION

- Light fitting protection: **IP66 / IP69**
- Maximum ambient temperature: **t_a = 50 °C**
- Lifetime: 50 000 hours / L90B10
- Maximum light fitting efficiency: 165 lm/W
- **CRI > 80: 4000 K** – standard
- CRI > 80: 3000 K, 5000 K, 6500 K – on request
- CRI > 90: 3000 K, 4000 K, 5000 K, 6500 K – on request
- MacAdam = 3 SDCM
- Diffuser: translucent PC (high mechanical resistance, UV stability)
- Body: grey PC (high mechanical resistance, UV stability)
- Snap-in mounting clips: stainless steel
- Ventilation membrane in the base eliminating vacuum and condensate build-up
- 3 or 5-pole **external terminal strip**, conductor cross-sectional area: 1.5 or 2.5 mm²
- Fittings may be **lined with zero distance** between them
- Optional constant luminous flux (CLO) in DALI version
- Electric equipment: LED modules, fixed output driver or DALI driver
- The package includes: stainless hooks and stainless brackets
- The values stated for power consumption and luminous flux are in a tolerance of ± 7,5 %



Type	Max, ambient temperature [°C]	Luminous flux of LED modules [lm]	Luminous flux of light fitting [lm]	Power consumption [W]	System efficacy [lm/W]	UGR Longitudinal/transverse	Net weight [kg]	A [mm]	D [mm]
Up to ambient temperature t _a = 50 °C - body: grey polycarbonate - diffuser: translucent polycarbonate									
INNOVA 1.4ft PC 2600/840	50	2600	2440	16,1	152	22.1 / 20.4	1,5	1170	420 - 700
INNOVA 1.4ft PC 3200/840	50	3100	2910	19,1	152	22.7 / 21.0	1,5	1170	420 - 700
INNOVA 1.4ft PC 4400/840	45	4300	4040	26,0	155	23.9 / 22.2	1,5	1170	420 - 700
INNOVA 1.4ft PC 6400/840	45	6120	5750	36,1	159	25.1 / 23.4	1,5	1170	420 - 700
INNOVA 1.4ft PC 8800/840	40	8690	8170	49,7	164	26.3 / 24.6	1,6	1170	420 - 700
INNOVA 1.5ft PC 3250/840	50	3240	3050	19,5	156	22.1 / 20.5	1,8	1450	700 - 980
INNOVA 1.5ft PC 4000/840	50	3850	3620	23,3	155	22.7 / 21.1	1,8	1450	700 - 980
INNOVA 1.5ft PC 5500/840	45	5340	5020	31,9	157	23.9 / 22.2	1,8	1450	700 - 980
INNOVA 1.5ft PC 8000/840	45	7780	7310	44,3	165	25.2 / 23.5	1,8	1450	700 - 980
INNOVA 1.5ft PC 11000/840	40	12310	11570	71,1	163	26.8 / 25.1	1,9	1450	700 - 980

INNOVA 1.4ft PC 3200/840 = suitable replacement for tube light fitting PRIMA 136 PC – 1 × 36 W

INNOVA 1.4ft PC 6400/840 = suitable replacement for tube light fitting PRIMA 236 PC – 2 × 36 W

INNOVA 1.5ft PC 4000/840 = suitable replacement for tube light fitting PRIMA 158 PC – 1 × 58 W

INNOVA 1.5ft PC 8000/840 = suitable replacement for tube light fitting PRIMA 258 PC – 2 × 58 W

INNOVA PC

Diffuser made of translucent polycarbonate

Type	1x3P	1x5P	DALI 1x5P	2x3P	2x5P	DALI 2x5P
INNOVA 1.4ft PC 2600/840...	72111	72112	72113	72115	72116	72117
INNOVA 1.4ft PC 3200/840...	72121	72122	72123	72125	72126	72127
INNOVA 1.4ft PC 4400/840...	72131	72132	72133	72135	72136	72137
INNOVA 1.4ft PC 6400/840...	72141	72142	72143	72145	72146	72147
INNOVA 1.4ft PC 8800/840...	72101	72102	72103	72105	72106	72107
INNOVA 1.5ft PC 3250/840...	72151	72152	72153	72155	72156	72157
INNOVA 1.5ft PC 4000/840...	72161	72162	72163	72165	72166	72167
INNOVA 1.5ft PC 5500/840...	72171	72172	72173	72175	72176	72177
INNOVA 1.5ft PC 8000/840...	72181	72182	72183	72185	72186	72187
INNOVA 1.5ft PC 11000/840...	72191	72192	72193	72195	72196	72197

LEGEND

1x3P - a version featuring a non-dimmable ballast and a single 3-pole external terminal strip

1x5P - a version featuring a non-dimmable ballast and a single 5-pole external terminal strip

DALI 1x5P - a version featuring a digitally dimmable ballast and a single 5-pole external terminal strip

2x3P - a version featuring a non-dimmable ballast, two 3-pole external terminal strips and 3-wire connecting cables (1F), for continuous row installation

2x5P - a version featuring a non-dimmable ballast, two 5-pole external terminal strips and 5-wire connecting cables (3F), for continuous row installation

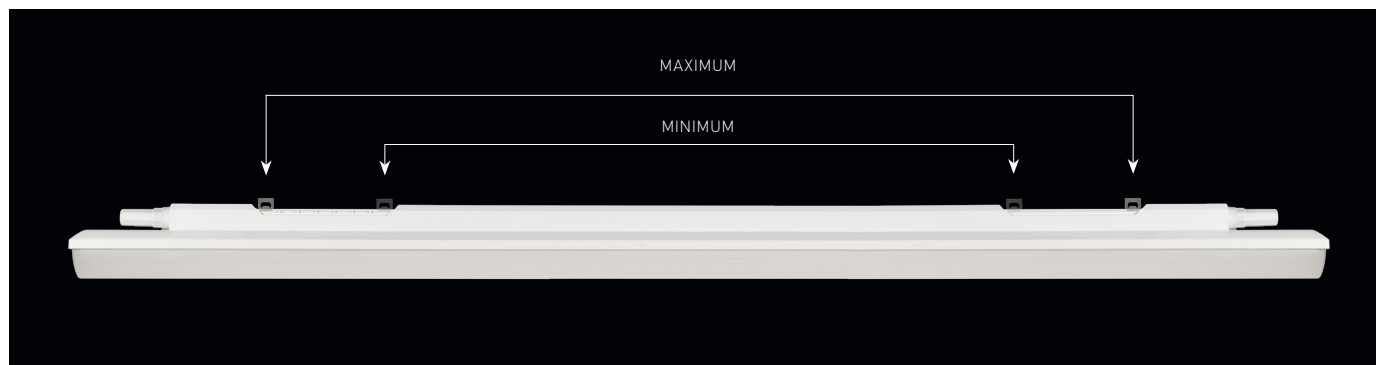
DALI 2x5P - a version featuring a digitally dimmable ballast, two 5-pole external terminal strips and 5-wire connecting cables (DALI 1F), for continuous row installation

LIGHT FITTING ATTACHMENT

- a) Directly to a ceiling or a wall with the use of screws and stainless brackets
- b) Suspension with the use of stainless hooks
- c) Attachment with the use of side hangers to the wall - is not included in accessories



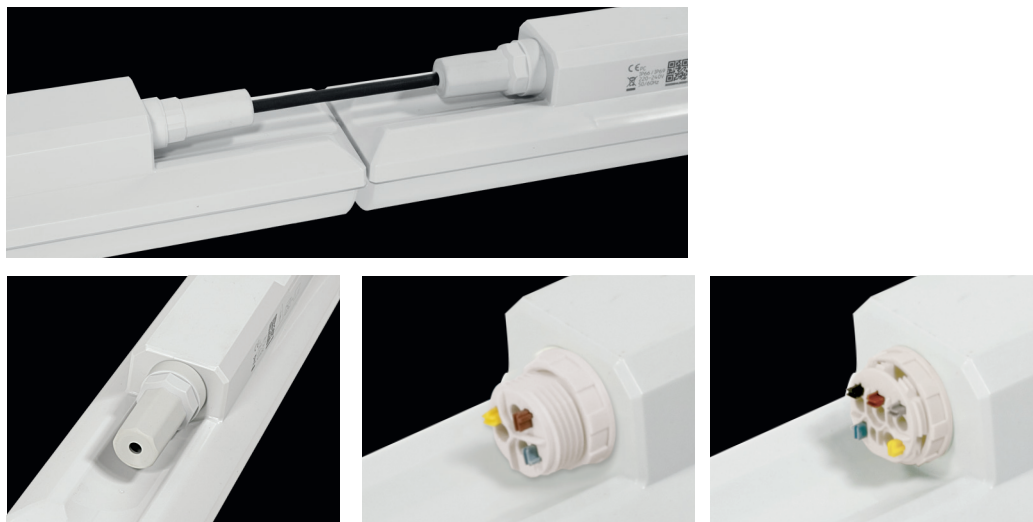
VARIABLE INSTALLATION PITCH



LIGHT FITTING INTERCONNECTION

An external terminal strip is used to ensure the supply cable can easily and quickly be connected with no need to open the light fixture (PLUG and PLAY system)

Interconnection of light fittings without spacing



LIGHT FITTING DETAILED VIEW

INNOVA PC

