

# LANUS SQUARE

NEW



... aluminium, dustproof, waterproof square light fitting

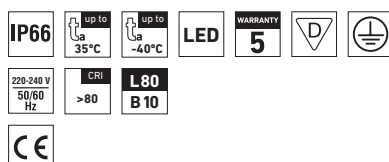
## USE

The light fixture is suitable for high halls, sports venues, advertising spaces and indoor and outdoor industrial spaces.

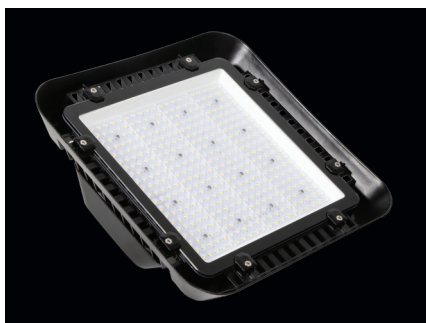
Characteristics of the used tempered glass and its shattering power are controlled by the ČSN EN 12150-1 standard. For applications where spontaneous fracture means a higher safety risk, we recommend to use the version with the safety film (SF).

## ADVANTAGES

- Light fitting protection **IP66**
- Ambient temperature from **-40°C to 35°C**
- Lifetime: 50 000 hours / L80B10
- Ventilation membrane
- Body: aluminium alloy, graphite black (RAL 9001)
- Optical cover: clear heat-strengthened safety glass
- Constant luminous flux even in ambient temperature of -40 °C
- Standard model CRI > 80: 4000 K
- At request CRI > 80: 3000 K, 5000 K, 6500 K, CRI > 90: 3000 K, 4000 K, 5000 K, 6500 K
- Installation using a 0.4m 3-core 3x1mm<sup>2</sup> CYSY cable
- Insulation: class I

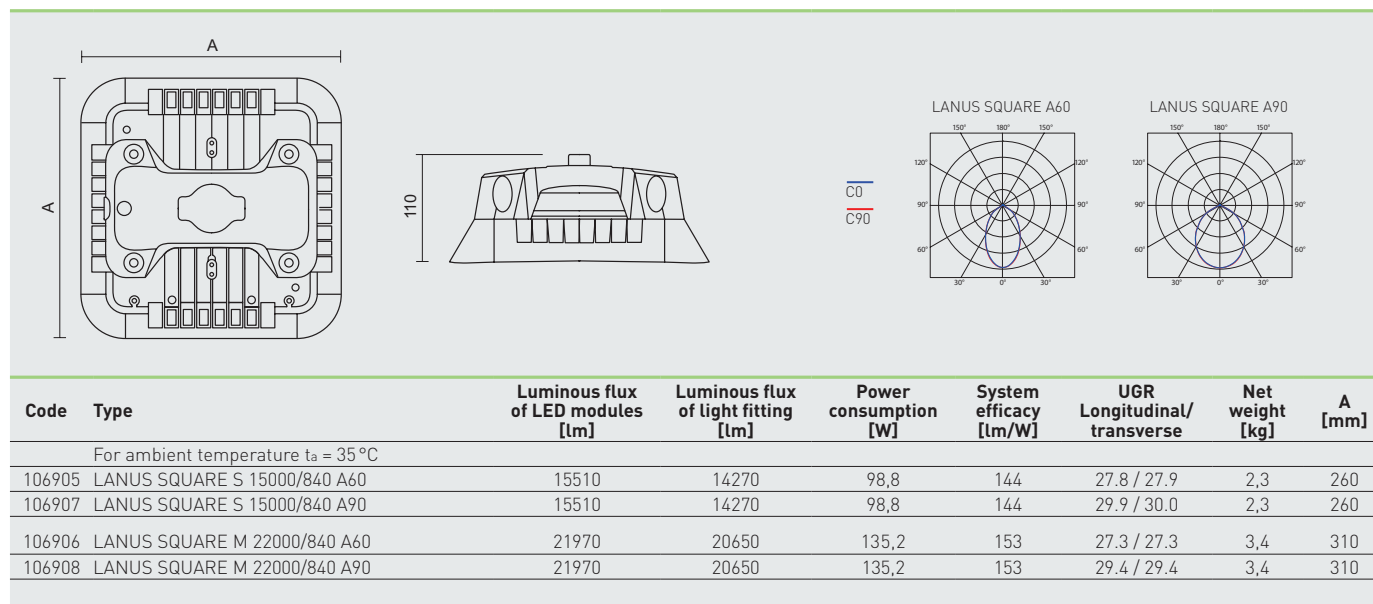


# LANUS SQUARE



## TECHNICAL DESCRIPTION

- Light fitting protection **IP66**
- Ambient temperature from **-40°C to 35°C**
- Maximum system efficacy: **153 lm/W**
- Lifetime: 50 000 hours / L80B10
- Body: aluminium alloy, graphite black (RAL 9001)
- Reflector cover: clear heat-strengthened safety glass
- Standard model CRI > 80: 4000 K
- Connection: a 0.4m 3-core 3x1mm2 CYSY cable
- Mounting: supplied with an eye bolt
- Electric equipment: LED modules, 1-10V dimmable driver controlled by 2-core 2x1mm2 cable
- Beam angle: 60° or 90°
- The values stated for power consumption and luminous flux are in a tolerance of ± 7.5 %



## LIGHT FITTING ATTACHMENT

- An eye bolt is supplied with the fitting
- Ceiling/wall brackets – not included
- Wall brackets – not included
- Rope attachment set – not included

