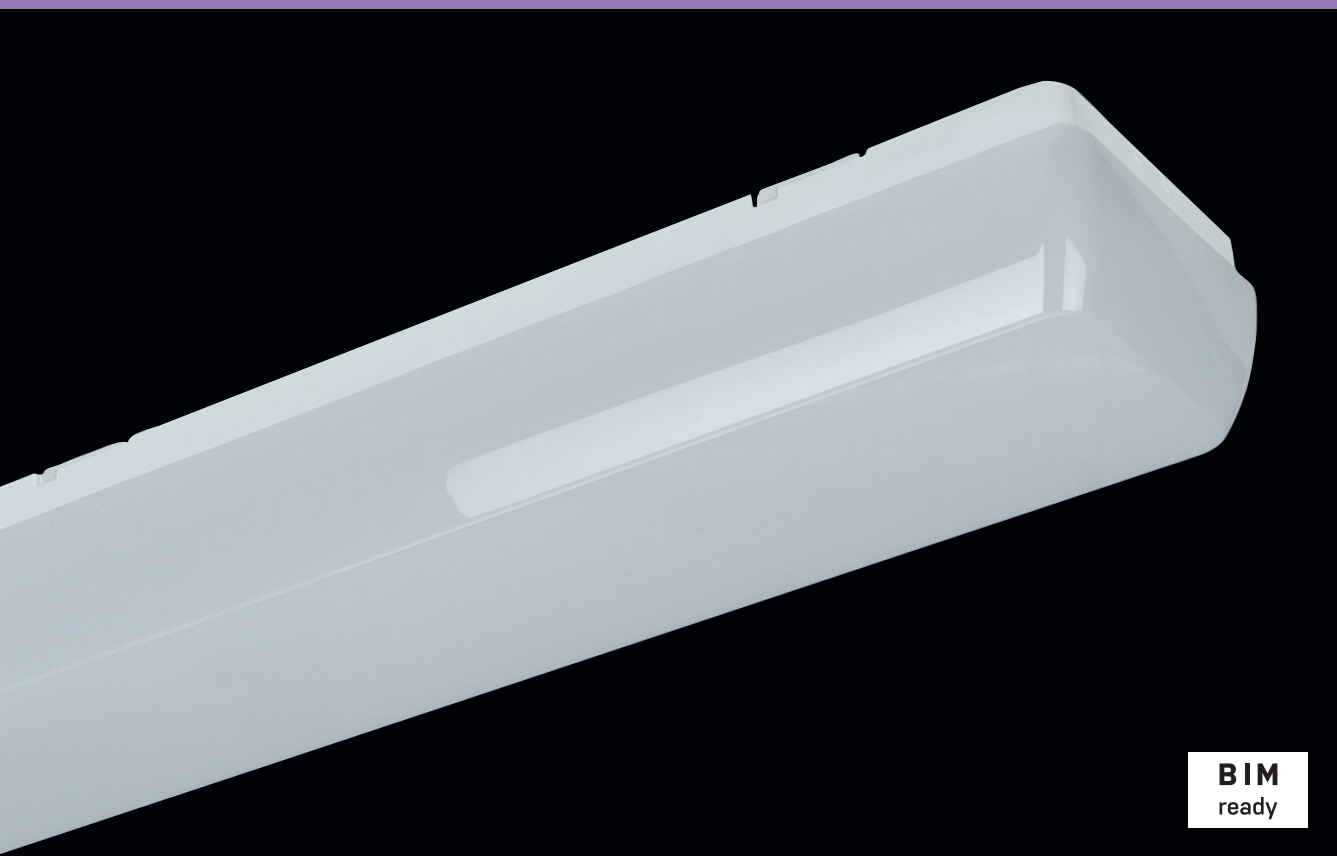


LINEA



BIM
ready

... indoor, surface-mounted, plastic.

USE

LINEA family is a perfect lighting solution of modern and technically functional illumination. It offers ceiling and wall-mounted luminaires with balanced shadowing and uniform light. Thanks to various sizes, individual premises as well as public buildings can be attractively illuminated.

The Linea light fitting line can be used as a comprehensive solution for lighting of office buildings, schools, hospitals, libraries, as well as individual lighting of flat interiors, corridors, sanitary and welfare facilities.

Thanks to its high luminous efficiency and low electricity consumption it is a suitable replacement for light fittings with fluorescent tubes.

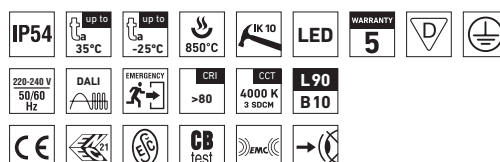
T A
Č R

Technology
Agency
of the Czech Republic

ADVANTAGES

- Light fitting protection **IP54**
- Maximum ambient temperature up to **t_a = 35 °C**
- Lifetime: 50,000 hours / L90B10
- Diffuser: translucent polycarbonate (PC) = high light transmission
- Body: white polycarbonate (PC) = high mechanical resistance
- Up to 45 % lower electricity consumption when compared to tubes T5
- In DALI version possibility of constant luminous flux for whole lifetime (CLO)

- Standard model - CRI > 80: 4000 K
- At request CRI > 80: 3000 K, 5000 K, 6500 K, CRI > 90: 3000 K, 4000 K, 5000 K, 6500 K
- It can be delivered in dimmable or emergency version
- Certification: ESČ, ENEC, CB

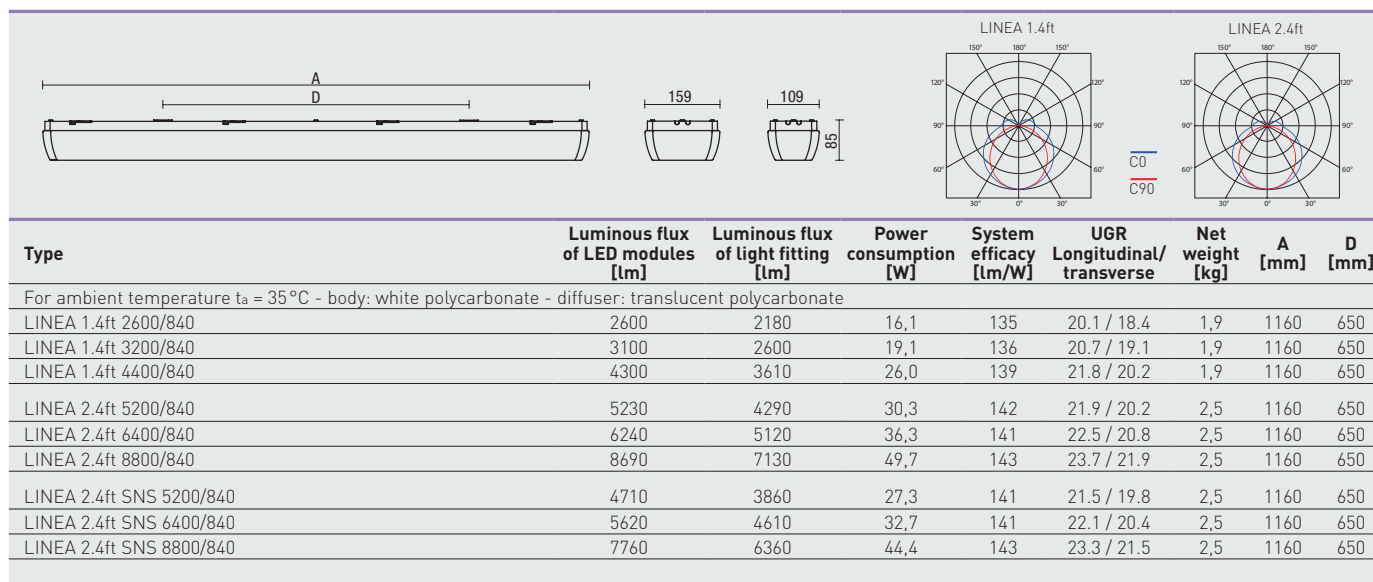


LINEA



TECHNICAL DESCRIPTION

- Light fitting protection: IP54
- Maximum ambient temperature: $t_a = 35^\circ\text{C}$, Maximum ambient temperature: $t_a = 0-25^\circ\text{C}$ (version with emergency back-up source for 1 or 3 hours; M1h, M3h with autotest)
- Maximum system efficacy: 143 lm/W
- The watt and lumen values can vary by $\pm 7,5\%$
- Standard model - CRI > 80: 4000 K
- MacAdam = 3 SDCM
- Lifetime: 50,000 hours / L90B10
- Diffuser: translucent polycarbonate (PC), UV stable, impact-resistant
- Body: white polycarbonate (PC), UV stable, impact-resistant
- Reflector: steel sheet, white colour (RAL 9003)
- Rotary cap: polyamide + 10 % glass fibre
- Sealing: polyurethane (PUR), foamed body groove
- Cable glands: rubber (SBS)
- Terminal block: screwless, three-pole (basic version)
- Electric equipment: LED modules, current driver or current driver DALI



63150 LINEA 1.4ft 3200/840 = suitable replacement for T8 fl. tube light fitting SM 136 - 1x36W
 63160 LINEA 1.4ft 4400/840 = suitable replacement for T8 fl. tube light fitting SM 158 - 1x58W

63250 LINEA 2.4ft 6400/840 = suitable replacement for T8 fl. tube light fitting SM 236 - 2x36W
 63260 LINEA 2.4ft 8800/840 = suitable replacement for T8 fl. tube light fitting SM 258 - 2x58W

LINEA

Diffuser made of translucent polycarbonate

Code	Type	M1h	M3h	DALI	DALI M1h	DALI M3h	SNS	CORRIDOR
63140	LINEA 1.4ft 2600/840	63144	x	63143	63147	x	x	x
63150	LINEA 1.4ft 3200/840	63154	x	63153	63157	x	x	x
63160	LINEA 1.4ft 4400/840	63164	x	63163	63167	x	x	x
63240	LINEA 2.4ft 5200/840	63244	63245	63243	63247	63246	63241	63248
63250	LINEA 2.4ft 6400/840	63254	63255	63253	63257	63256	63251	63258
63260	LINEA 2.4ft 8800/840	63264	63265	63263	63267	63266	63261	63268

LEGEND

- DALI** - version with digital dimmable driver DALI
SNS - microwave motion sensor
CORRIDOR - version with digital dimmable driver DALI and set corridor function

- M1h** - emergency back-up source with operating time of 1 hour (SA) for both permanent and emergency illumination with autotest
M3h - emergency back-up source with operating time of 3 hours (SA) for both permanent and emergency illumination with autotest
 Batteries must be formatted before their putting into operation. Assembly instructions must be observed at installation.

LIGHT FITTING ATTACHMENT AND ITS DETAILED VIEW

Directly to a ceiling or a wall with the use of screws



LINEA

