

# LINEA SQUARE



**BIM**  
ready

... interior square, plastic, surface-mounting.

## USE

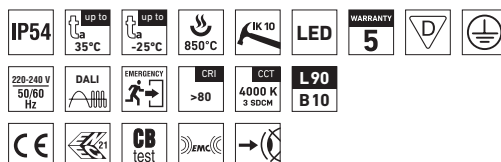
LINEA family is a perfect lighting solution of modern and technically functional illumination. It offers ceiling and wall-mounted luminaires with balanced shadowing and uniform light. Thanks to various sizes, individual premises as well as public buildings can be attractively illuminated.

The Linea light fitting line can be used as a comprehensive solution for lighting of office buildings, schools, hospitals, libraries, as well as individual lighting of flat interiors, corridors, sanitary and welfare facilities.

Thanks to its high luminous efficiency and low electricity consumption it is a suitable replacement for light fittings with fluorescent tubes.

## ADVANTAGES

- Light fitting protection **IP54**
- Maximum ambient temperature up to **t<sub>a</sub> = 35 °C**
- Lifetime: 50,000 hours / L90B10
- Diffuser: translucent polycarbonate (PC) = high light transmission
- Body: white polycarbonate (PC) = high mechanical resistance
- Up to 50 % lower electricity consumption when compared to compact fluorescent tubes
- In DALI version possibility of constant luminous flux for whole lifetime (CLO)
- Standard model - CRI > 80: 4000 K
- At request CRI > 80: 3000 K, 5000 K, 6500 K
- It can be delivered in dimmable or emergency version
- Certification: ENEC, CB

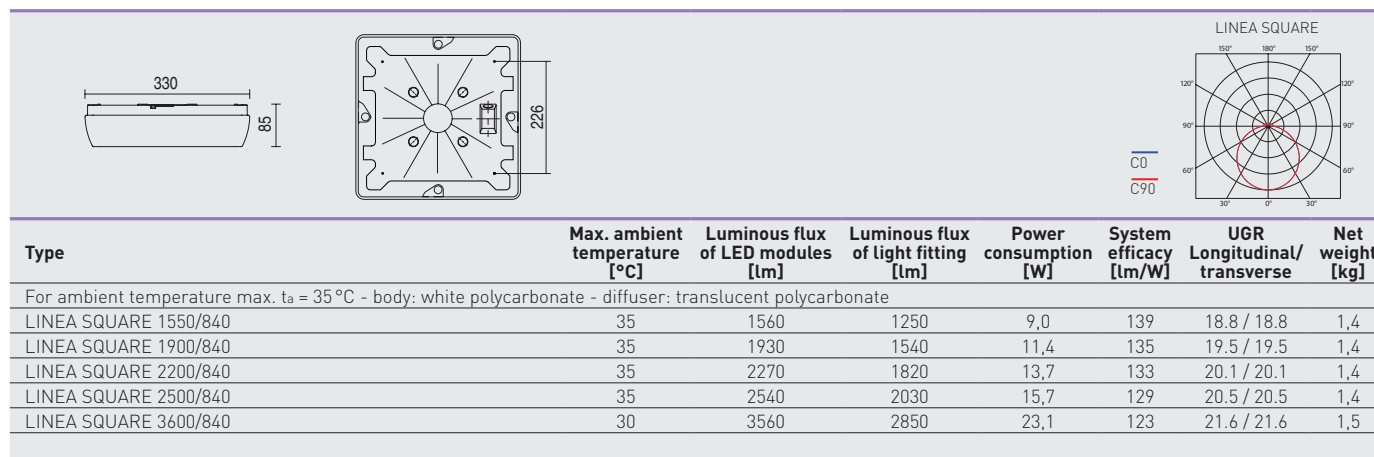


# LINEA SQUARE



## TECHNICAL DESCRIPTION

- Light fitting protection: IP54
- Maximum ambient temperature:  $t_a = 35^\circ\text{C}$ , Maximum ambient temperature:  $t_a = 0-25^\circ\text{C}$  (version with emergency back-up source for 1 or 3 hours; M1h, M3h with autotest)
- Maximum system efficacy: 139 lm/W
- The watt and lumen values can vary by  $\pm 7,5\%$
- Standard model - CRI > 80: 4000 K
- MacAdam = 3 SDCM
- Lifetime: 50,000 hours / L90B10
- Diffuser: translucent polycarbonate (PC), UV stable, impact-resistant
- Body: white polycarbonate (PC), UV stable, impact-resistant
- Reflector: steel sheet, white colour (RAL 9003)
- Rotary cap: polyamide + 10 % glass fibre
- Sealing: polyurethane (PUR), foamed body groove
- Cable glands: rubber (SBS)
- Terminal block: screwless, three-pole (basic version)
- Electric equipment: LED modules, current driver or current driver DALI



63560 LINEA SQUARE 3600/840 = suitable replacement for compact fluorescent lamps 2x26 W

## LINEA SQUARE

Diffuser made of translucent polycarbonate

Code	Type	M1h	M3h	DALI	DALI M1h	DALI M3h	SNS	SNS M1h	SNS M3h	CORRIDOR	CORRIDOR M1h	CORRIDOR M3h
63348	LINEA SQUARE 1550/840	63356	63360	x	x	x	63352	63365	63369	x	x	x
63349	LINEA SQUARE 1900/840	63357	63361	63374	63381	63384	63353	63366	63370	63377	63388	63392
63350	LINEA SQUARE 2200/840	63358	63362	63375	63382	63385	63354	63367	63371	63378	63389	63393
63351	LINEA SQUARE 2500/840	63359	63363	63376	63383	63386	63355	63368	63372	63379	63390	63394
63560	LINEA SQUARE 3600/840	63564	63364	63563	63567	63387	63561	63566	63373	63380	63391	63395

Example of type marking: 63376 = LINEA SQUARE 2500/840 DALI

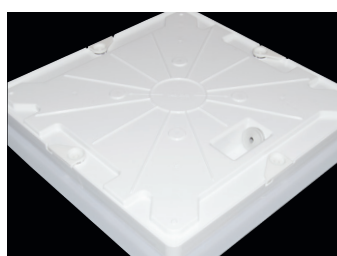
## LEGEND

- DALI** – version with digital dimmable driver DALI  
**SNS** – microwave motion sensor  
**CORRIDOR** – version with digital dimmable driver DALI and set corridor function

- M1h** – emergency back-up source with operating time of 1 hour (SA) for both permanent and emergency illumination with autotest  
**M3h** – emergency back-up source with operating time of 3 hours (SA) for both permanent and emergency illumination with autotest  
 Batteries must be formatted before their putting into operation. Assembly instructions must be observed at installation.

## LIGHT FITTING ATTACHMENT AND ITS DETAILED VIEW

Directly to a ceiling or a wall with the use of screws



## LINEA SQUARE

