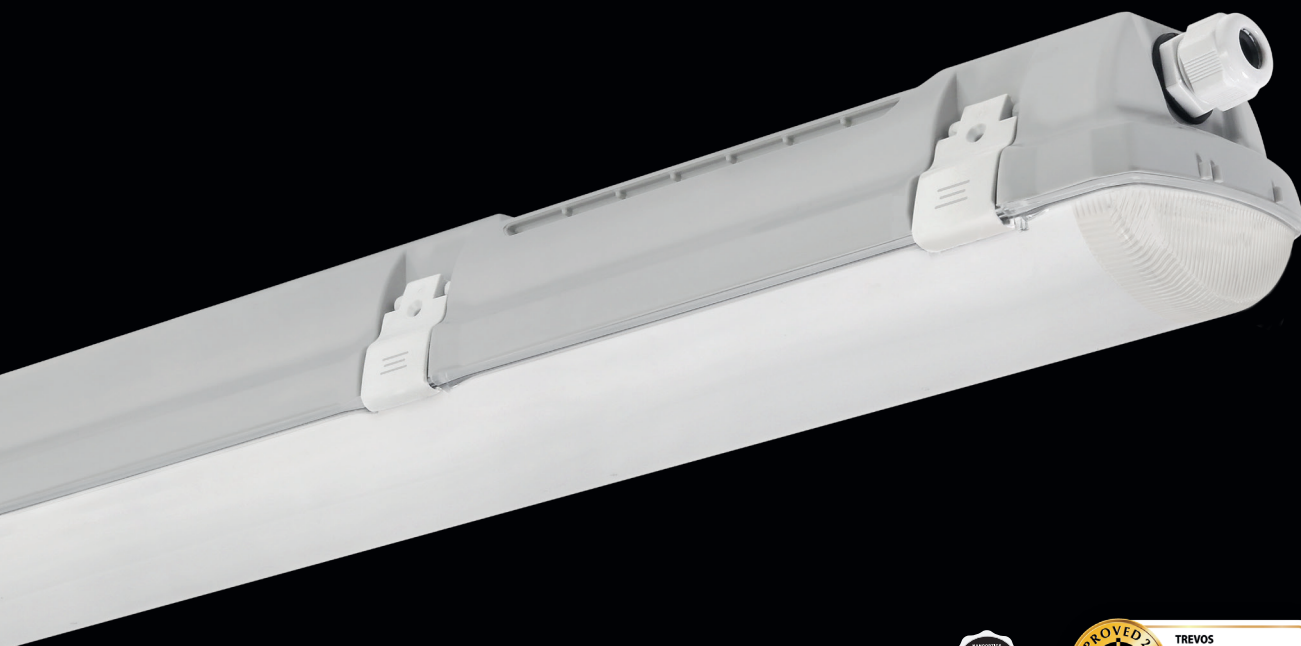


NANOTTICA ES ABS



... energy saver, exceptional efficiency,
ceiling height from 3.5 to 8 m, chemically resistant.

USE

Compared to its basic version, Nanottica ES ABS boasts **lower energy consumption**, which translates into considerably **higher luminous efficacy (lm/W)**.

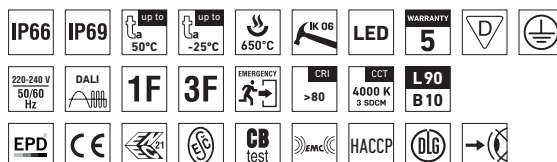
The fitting is highly recommended for **illumination of premises where workers' visual precision is of paramount importance**. These include workshops where fine assembly work is performed as well as craft workshops and visual inspection areas.

The fitting's standard beam angle makes it a great choice for premises with a fitting installation height of **3.5 to 8 m**. In addition to indoor spaces, it is designed for agricultural buildings and other spaces with chemically aggressive environments due to ammonia fumes, lye fumes, alkali and hot water (hydrolysis). The fitting is primarily intended for large **agricultural premises and industrial halls such as farms, stables, production plants and warehouses, car washes and laboratories** with no explosion hazard. IP69-rated and HACCP-compliant, the fitting's design also makes it suitable for the food industry.

The fitting's base is made of ABS and diffuser of AC, resulting in their **exceptional chemical resistance**. Emissions in the environment of use may reduce the usability of the plastics; for more information see page 367.

ADVANTAGES

- Maximum light fitting efficiency: **160 lm/W**
- Patented optics ensures absolute control over light beam distribution
- Low **UGR ranging from 18,9 to 23,4**
- Light fitting protection **IP66 / IP69**
- High temperature resistance in a range from $t_a = -25^{\circ}\text{C}$ to $t_a = 50^{\circ}\text{C}$
- Lifetime: 50 000 hours / L90B10
- High **chemical resistance**
- **Variable suspension pitch**, optional installation of light fitting even on an existing structure on which the original light fittings were suspended
- Optional throughwiring (up to 7 wires inside the light fitting)
- Standard model CRI > 80: 4000 K
- On request CRI > 80: 3000 K, 5000 K, 6500 K
- CRI > 90: 3000 K, 4000 K, 5000 K, 6500 K
- Optional delivery in dimmable version
- Certificates: **EPD, ESČ, ENEC, CB, DLG, HACCP**

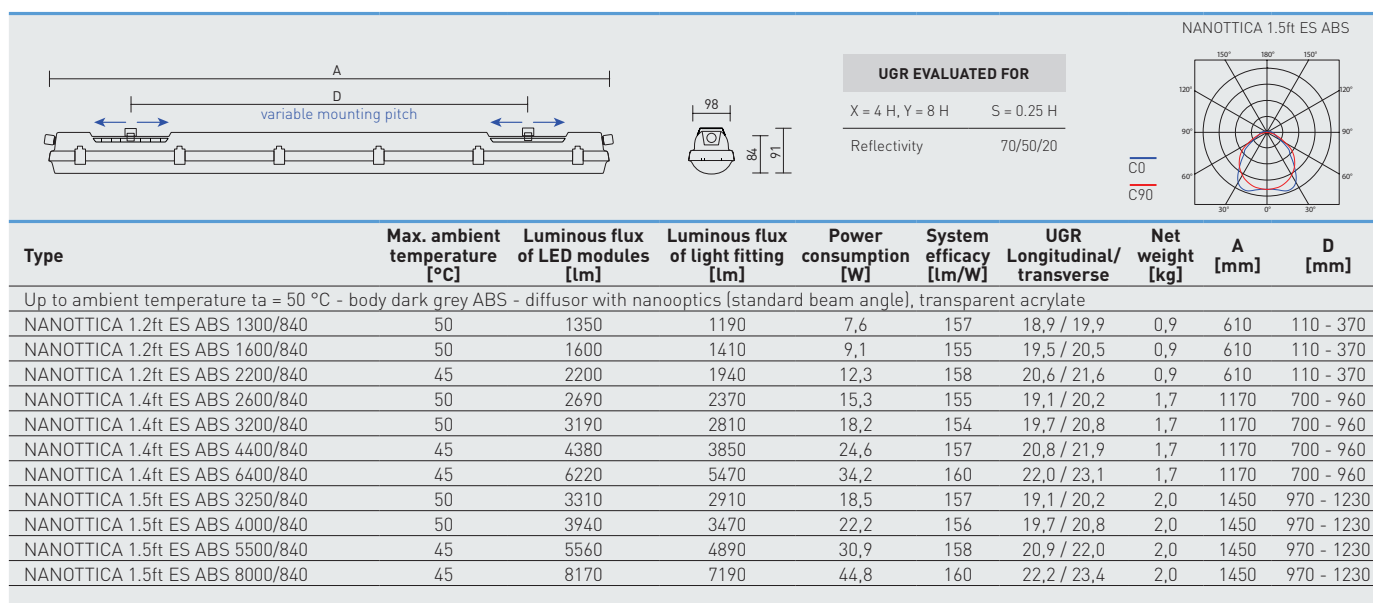


NANOTTICA ES ABS, ABSc



TECHNICKÝ POPIS

- Light fitting protection: **IP66 / IP69**
- Maximum ambient temperature: **ta = 50 °C**
- Maximum ambient temperature: **ta = 0-25 °C** for version with emergency back-up M1h, M3h
- Lifetime: 50 000 hours / L90B10
- Maximum light fitting efficiency: **160 lm/W**
- **UGR ranging from 18,9 to 23,4**
- Optimum luminaire installation height **from 3.5 to 8 m**
- **CRI > 80: 4000 K** – standard
- CRI > 80: 3000 K, 5000 K, 6500 K - on request
- CRI > 90: 3000 K, 4000 K, 5000 K, 6500 K - on request
- MacAdam = 3 SDCM
- Diffuser: **transparent AC with nanooptics** (high chemical resistance, UV stability)
- Body: dark grey ABS (high chemical resistance, UV stability)
- Reflector: steel sheet, white colour (RAL 9003)
- **Mounting clips:** stainless steel, stainless steel hooks included
- Clips: polyamide + 15 % glass fibre or stainless steel + polyamide
- Sealing: polyurethane (PUR), foamed body groove
- Cable glands: screwed PG 13.5 (standard), or rubber (SBS)
- Terminal block: screwless, three-pole (basic version), or screwed
- The values stated for power consumption and luminous flux are in a tolerance of $\pm 7.5 \%$



NANOTTICA ES ABS

Code	Type
102822	NANOTTICA 1.2ft ES ABS 1300/840
102823	NANOTTICA 1.2ft ES ABS 1600/840
102824	NANOTTICA 1.2ft ES ABS 2200/840
102825	NANOTTICA 1.4ft ES ABS 2600/840
102826	NANOTTICA 1.4ft ES ABS 3200/840
102827	NANOTTICA 1.4ft ES ABS 4400/840
102828	NANOTTICA 1.4ft ES ABS 6400/840
102829	NANOTTICA 1.5ft ES ABS 3250/840
102830	NANOTTICA 1.5ft ES ABS 4000/840
102831	NANOTTICA 1.5ft ES ABS 5500/840
102832	NANOTTICA 1.5ft ES ABS 8000/840

Non-dimmable driver - plastic clips

1F	3F	M1h	M3h	3F M1h	3F M3h
102833	102844	x	x	x	x
102834	102845	x	x	x	x
102835	102846	x	x	x	x
102836	102847	102858	102866	102874	102882
102837	102848	102859	102867	102875	102883
102838	102849	102860	102868	102876	102884
102839	102850	102861	102869	102877	102885
102840	102851	102862	102870	102878	102886
102841	102852	102863	102871	102879	102887
102842	102853	102864	102872	102880	102888
102843	102854	102865	102873	102881	102889

NANOTTICA ES ABSc

Code	Type
102890	NANOTTICA 1.2ft ES ABSc 1300/840
102891	NANOTTICA 1.2ft ES ABSc 1600/840
102892	NANOTTICA 1.2ft ES ABSc 2200/840
102893	NANOTTICA 1.4ft ES ABSc 2600/840
102894	NANOTTICA 1.4ft ES ABSc 3200/840
102895	NANOTTICA 1.4ft ES ABSc 4400/840
102896	NANOTTICA 1.4ft ES ABSc 6400/840
102897	NANOTTICA 1.5ft ES ABSc 3250/840
102898	NANOTTICA 1.5ft ES ABSc 4000/840
102899	NANOTTICA 1.5ft ES ABSc 5500/840
102900	NANOTTICA 1.5ft ES ABSc 8000/840

Non-dimmable driver - stainless clips [c]

1F	3F	M1h	M3h	3F M1h	3F M3h
102901	102912	x	x	x	x
102902	102913	x	x	x	x
102903	102914	x	x	x	x
102904	102915	102926	102934	102942	102950
102905	102916	102927	102935	102943	102951
102906	102917	102928	102936	102944	102952
102907	102918	102929	102937	102945	102953
102908	102919	102930	102938	102946	102954
102909	102920	102931	102939	102947	102955
102910	102921	102932	102940	102948	102956
102911	102922	102933	102941	102949	102957

NANOTTICA ES ABS DALI

Code	Type
102958	NANOTTICA 1.2ft ES ABS 1300/840 DALI
102959	NANOTTICA 1.2ft ES ABS 1600/840 DALI
102960	NANOTTICA 1.2ft ES ABS 2200/840 DALI
102961	NANOTTICA 1.4ft ES ABS 2600/840 DALI
102962	NANOTTICA 1.4ft ES ABS 3200/840 DALI
102963	NANOTTICA 1.4ft ES ABS 4400/840 DALI
102964	NANOTTICA 1.4ft ES ABS 6400/840 DALI
102965	NANOTTICA 1.5ft ES ABS 3250/840 DALI
102966	NANOTTICA 1.5ft ES ABS 4000/840 DALI
102967	NANOTTICA 1.5ft ES ABS 5500/840 DALI
102968	NANOTTICA 1.5ft ES ABS 8000/840 DALI

Digital dimmable driver DALI - plastic clips

1F	3F	M1h	M3h	3F M1h	3F M3h
102969	x	x	x	x	x
102970	x	x	x	x	x
102971	x	x	x	x	x
102972	102983	102994	103002	103010	103018
102973	102984	102995	103003	103011	103019
102974	102985	102996	103004	103012	103020
102975	102986	102997	103005	103013	103021
102976	102987	102998	103006	103014	103022
102977	102988	102999	103007	103015	103023
102978	102989	103000	103008	103016	103024
102979	102990	103001	103009	103017	103025

NANOTTICA ES ABSc DALI

Code	Type
103026	NANOTTICA 1.2ft ES ABSc 1300/840 DALI
103027	NANOTTICA 1.2ft ES ABSc 1600/840 DALI
103028	NANOTTICA 1.2ft ES ABSc 2200/840 DALI
103029	NANOTTICA 1.4ft ES ABSc 2600/840 DALI
103030	NANOTTICA 1.4ft ES ABSc 3200/840 DALI
103031	NANOTTICA 1.4ft ES ABSc 4400/840 DALI
103032	NANOTTICA 1.4ft ES ABSc 6400/840 DALI
103033	NANOTTICA 1.5ft ES ABSc 3250/840 DALI
103034	NANOTTICA 1.5ft ES ABSc 4000/840 DALI
103035	NANOTTICA 1.5ft ES ABSc 5500/840 DALI
103036	NANOTTICA 1.5ft ES ABSc 8000/840 DALI

Digital dimmable driver DALI - stainless clips (c)

1F	3F	M1h	M3h	3F M1h	3F M3h
103037	x	x	x	x	x
103038	x	x	x	x	x
103039	x	x	x	x	x
103040	103051	103062	103070	103078	103086
103041	103052	103063	103071	103079	103087
103042	103053	103064	103072	103080	103088
103043	103054	103065	103073	103081	103089
103044	103055	103066	103074	103082	103090
103045	103056	103067	103075	103083	103091
103046	103057	103068	103076	103084	103092
103047	103058	103069	103077	103085	103093

LEGEND

1F	1-phase 3 core through-wiring in the luminaire
3F	3-phase 5 core through-wiring in the luminaire
M1h	emergency back-up source with 1 hour operating time for maintained emergency illumination
M3h	emergency back-up source with 3 hour operating time for maintained emergency illumination
3F Mxh	3-phase 5 core through-wiring in the luminaire (L3 used for emergency unit unswitched power supply)

DALI	version with digital dimmable driver DALI
DALI 1F	1-phase 5 core through-wiring in the luminaire
DALI 3F	3-phase 7 core through-wiring in the luminaire
DALI 3F Mxh	3-phase 7 core through-wiring in the luminaire (L3 used for emergency unit unswitched power supply)

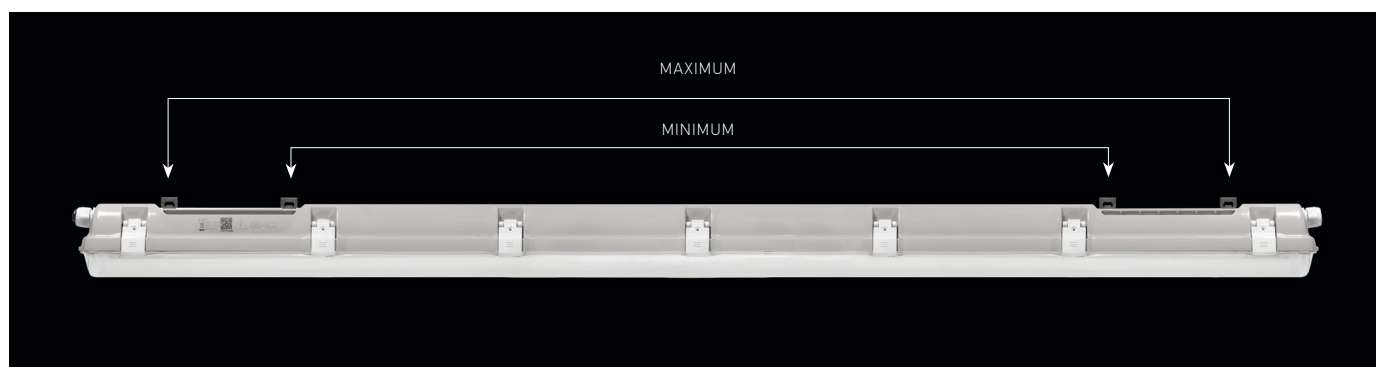
LIGHT FITTING ATTACHMENT

- a) Directly to a ceiling or a wall with the use of screws and stainless brackets
- b) Suspension with the use of stainless hooks
- c) Attachment with the use of side hangers to the wall - is not included in accessories



VARIABLE INSTALLATION PITCH

NANOTTICA ES ABS



LIGHT FITTING DETAILED VIEW

NANOTTICA ES ABS

