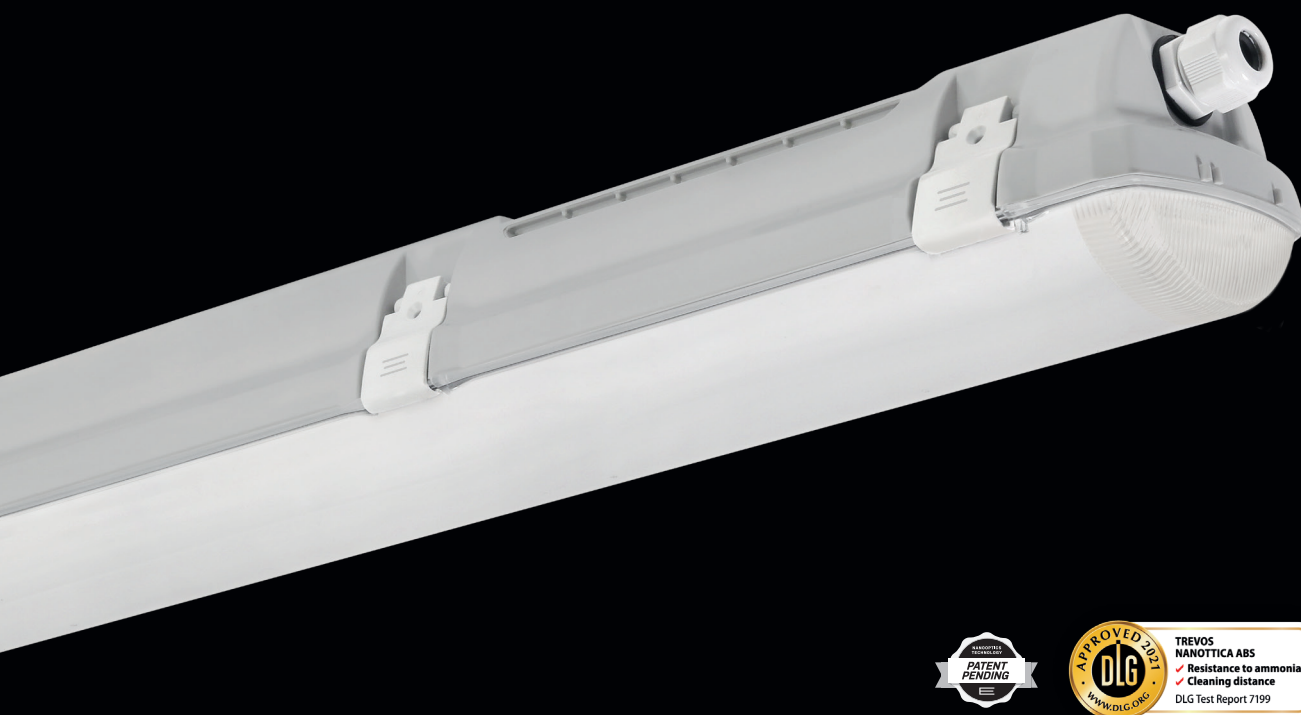


NANOTTICA NB ABS



... ceiling height from 7.5 to 12 m, chemically resistant.

USE

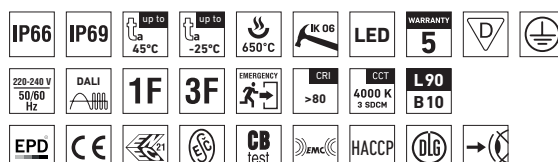
The fixture boasts a **low unified glare rating with UGR values** its patented nanooptics. This ensures eye comfort, **high visual performance and workplace safety**, which indirectly **translates into higher productivity**.

The luminaire's **narrow-beam angle** makes it suitable for premises with an optimum luminaire installation height of **7.5 to 12 m**. The luminaire is designed for indoor spaces as well as for agricultural buildings and other spaces with chemically aggressive environments due to ammonia fumes, lye fumes, alkali and hot water (hydrolysis). The fitting is primarily intended for **walls and large corridors in high industrial and agricultural buildings, production plants and warehouse aisles, farms, stables and laboratories** with no explosion hazard. IP69-rated and HACCP-compliant, the fitting's design also makes it suitable for the food industry.

The fitting's base is made of ABS and diffuser of AC, resulting in their **exceptional chemical resistance**. Emissions in the environment of use may reduce the usability of the plastics; for more information see page 367.

ADVANTAGES

- Patented optics ensures absolute control over light beam distribution
- Narrow Beam angle (NB), optimum luminaire installation height **from 7.5 to 12 m**
- Low **UGR ranging from 21,4 to 24,8**
- Light fitting protection **IP66 / IP69**
- High temperature resistance in a range from **ta = -25°C to ta = 45°C**
- Lifetime: 50 000 hours / L90B10
- High **chemical resistance**
- **Variable suspension pitch**, optional installation of light fitting even on an existing structure on which the original light fittings were suspended
- Optional throughwiring (up to 7 wires inside the light fitting)
- Standard model CRI > 80: 4000 K
- On request CRI > 80: 3000 K, 5000 K, 6500 K
- CRI > 90: 3000 K, 4000 K, 5000 K, 6500 K
- Optional delivery in dimmable version
- Certificates: **ESĈ, ENEC, CB, DLG, HACCP**



NANOTTICA NB ABS, ABSc



TECHNICAL DESCRIPTION

- Light fitting protection: **IP66 / IP69**
- Maximum ambient temperature: **ta = 45 °C**
- Maximum ambient temperature: **ta = 0-25 °C** for version with emergency back-up M1h, M3h
- Lifetime: 50 000 hours / L90B10
- Maximum light fitting efficiency: **153 lm/W**
- UGR ranging from 21,4 to 24,8**
- Optimum luminaire installation height **from 7.5 to 12 m**
- CRI > 80: 4000 K** – standard
- CRI > 80: 3000 K, 5000 K, 6500 K - on request
- CRI > 90: 3000 K, 4000 K, 5000 K, 6500 K - on request
- MacAdam = 3 SDCM
- Diffuser: **transparent AC with nanooptics**
- Narrow Beam** (high chemical resistance, UV stability)
- Body: dark grey ABS (high chemical resistance, UV stability)
- Reflector: steel sheet, white colour (RAL 9003)
- Mounting clips:** stainless steel, stainless steel hooks included
- Clips: polyamide + 15 % glass fibre or stainless steel + polyamide
- Sealing: polyurethane (PUR), foamed body groove
- Cable glands: screwed PG 13.5 (standard), or rubber (SBS)
- Terminal block: screwless, three-pole (basic version), or screwed
- The values stated for power consumption and luminous flux are in a tolerance of $\pm 7.5 \%$

NANOTTICA 1.5ft NB ABS								
						UGR EVALUATED FOR X = 4 H, Y = 8 H S = 0.25 H Reflectivity 70/50/20		
Type	Max. ambient temperature [°C]	Luminous flux of LED modules [lm]	Luminous flux of light fitting [lm]	Power consumption [W]	System efficacy [lm/W]	UGR Longitudinal/transverse	Net weight [kg]	A [mm] D [mm]
Up to ambient temperature $t_a = 45 \text{ °C}$ - body dark grey ABS - diffuser with nanooptics NB (narrow beam angle), transparent acrylate								
NANOTTICA 1.4ft NB ABS 4400/840	45	4300	3740	26,0	144	23.5 / 21.4	1,7	1170 700 - 960
NANOTTICA 1.4ft NB ABS 6400/840	45	6120	5320	36,1	147	24.7 / 22.6	1,7	1170 700 - 960
NANOTTICA 1.5ft NB ABS 5500/840	45	5340	4650	31,9	146	23.5 / 21.5	2,0	1450 970 - 1230
NANOTTICA 1.5ft NB ABS 8000/840	45	7780	6770	44,3	153	24.8 / 22.8	2,0	1450 970 - 1230

NANOTTICA NB ABS

Code	Type
100881	NANOTTICA 1.4ft NB ABS 4400/840
100882	NANOTTICA 1.4ft NB ABS 6400/840
100883	NANOTTICA 1.5ft NB ABS 5500/840
100884	NANOTTICA 1.5ft NB ABS 8000/840

Non-dimmable driver - plastic clips

1F	3F	M1h	M3h	3F M1h	3F M3h
100885	100889	100893	100897	100901	100905
100886	100890	100894	100898	100902	100906
100887	100891	100895	100899	100903	100907
100888	100892	100896	100900	100904	100908

NANOTTICA NB ABSc

Code	Type
100909	NANOTTICA 1.4ft NB ABSc 4400/840
100910	NANOTTICA 1.4ft NB ABSc 6400/840
100911	NANOTTICA 1.5ft NB ABSc 5500/840
100912	NANOTTICA 1.5ft NB ABSc 8000/840

Non-dimmable driver - stainless clips (c)

1F	3F	M1h	M3h	3F M1h	3F M3h
100913	100917	100921	100925	100929	100933
100914	100918	100922	100926	100930	100934
100915	100919	100923	100927	100931	100935
100916	100920	100924	100928	100932	100936

NANOTTICA NB ABS DALI

Code	Type
100937	NANOTTICA 1.4ft NB ABS 4400/840 DALI
100938	NANOTTICA 1.4ft NB ABS 6400/840 DALI
100939	NANOTTICA 1.5ft NB ABS 5500/840 DALI
100940	NANOTTICA 1.5ft NB ABS 8000/840 DALI

Digital dimmable driver DALI - plastic clips

1F	3F	M1h	M3h	3F M1h	3F M3h
100941	100945	100949	100953	100957	100961
100942	100946	100950	100954	100958	100962
100943	100947	100951	100955	100959	100963
100944	100948	100952	100956	100960	100964

NANOTTICA NB ABSc DALI

Code	Type
100965	NANOTTICA 1.4ft NB ABSc 4400/840 DALI
100966	NANOTTICA 1.4ft NB ABSc 6400/840 DALI
100967	NANOTTICA 1.5ft NB ABSc 5500/840 DALI
100968	NANOTTICA 1.5ft NB ABSc 8000/840 DALI

Digital dimmable driver DALI - stainless clips (c)

1F	3F	M1h	M3h	3F M1h	3F M3h
100969	100973	100977	100981	100985	100989
100970	100974	100978	100982	100986	100990
100971	100975	100979	100983	100987	100991
100972	100976	100980	100984	100988	100992

LEGEND

- 1F** 1-phase 3 core through-wiring in the luminaire
3F 3-phase 5 core through-wiring in the luminaire
M1h emergency back-up source with 1 hour operating time for maintained emergency illumination
M3h emergency back-up source with 3 hour operating time for maintained emergency illumination
3F Mxh 3-phase 5 core through-wiring in the luminaire (L3 used for emergency unit unswitched power supply)

- DALI** version with digital dimmable driver DALI
DALI 1F 1-phase 5 core through-wiring in the luminaire
DALI 3F 3-phase 7 core through-wiring in the luminaire
DALI 3F Mxh 3-phase 7 core through-wiring in the luminaire (L3 used for emergency unit unswitched power supply)

LIGHT FITTING ATTACHMENT

- a) Directly to a ceiling or a wall with the use of screws and stainless brackets
- b) Suspension with the use of stainless hooks
- c) Attachment with the use of side hangers to the wall - is not included in accessories



VARIABLE INSTALLATION PITCH

NANOTTICA NB ABS



LIGHT FITTING DETAILED VIEW

NANOTTICA NB ABS

