

NAOS SQUARE MPR



... indoor, square, metal, with low UGR.

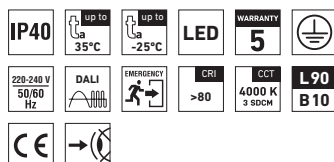
USE

Advanced lamp **with low profile** of total height of **34 mm only**.

The light fitting is suitable for offices, hallways, school interiors, libraries, lecture rooms, sanitary rooms, hospitals and passenger terminals.

ADVANTAGES

- Light fitting protection **IP40**
- Maximum ambient temperature up to **t_a = 35 °C**
- Lifetime: 50,000 hours / L90B10
- Diffuser: multi-layer micropyramid optics (MPR) with UGR < 19
- Body: steel sheet, white (RAL 9003) or silver (RAL 9006) colour
- Up to 45 % lower electricity consumption when compared to tubes T5
- In DALI version possibility of constant luminous flux for whole lifetime (CLO)
- Standard model - CRI > 80: 4000 K
- At request CRI > 80: 3000 K, 5000 K, 6500 K, CRI > 90: 3000 K, 4000 K, 5000 K, 6500 K
- It can be delivered in dimmable or emergency version
- Certification: ESČ

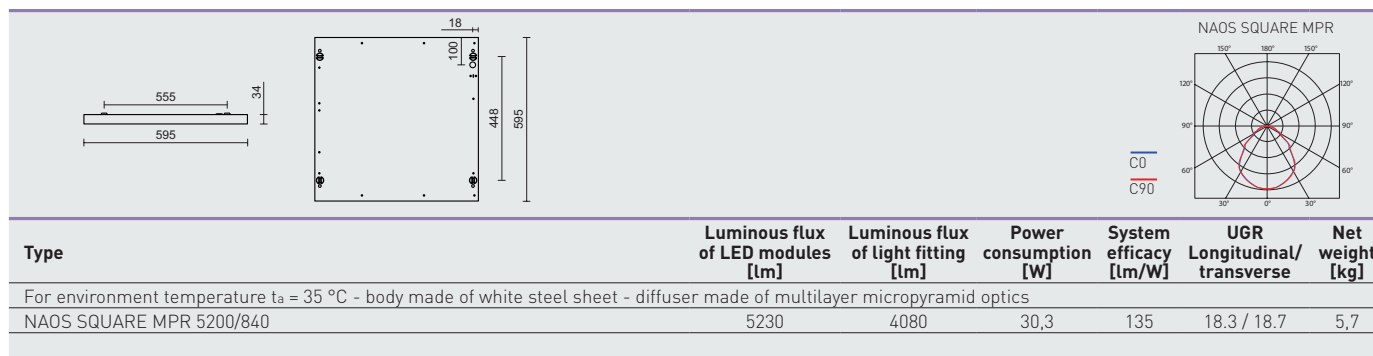


NAOS SQUARE MPR



TECHNICAL DESCRIPTION

- Light fitting protection: IP40
- Maximum ambient temperature: $t_a = 35^\circ\text{C}$, Maximum ambient temperature: $t_a = 0-25^\circ\text{C}$ (version with emergency back-up source for 1 or 3 hours; M1h, M3h)
- Maximum system efficacy: 135 lm/W
- The watt and lumen values can vary by $\pm 7,5\%$
- Standard model - CRI > 80: 4000 K
- MacAdam = 3 SDCM
- Lifetime: 50,000 hours / L90B10
- Diffuser: multi-layer micropyramid optics MPR for light distribution without glare according to EN 12464-1 with UGR < 19
- Body: steel sheet, white (RAL 9003) or silver (RAL 9006) colour
- Cable gland: rubber (SBS), white
- Terminal block: screwless, five-pole
- Securing of the cover: by the means of magnets
- Electric equipment: LED modules, current driver or current driver DALI



95810 NAOS SQUARE MPR 5200/840 = suitable replacement surface mounted or recessed fluorescent light fittings $4 \times 18\text{W}$ a $4 \times 14\text{W}$

NAOS SQUARE MPR

Code	Type
95810	NAOS SQUARE MPR 5200/840

Diffuser with multilayer micropyramid optics, white colour

M1h	M3h	DALI	DALI M1h	DALI M3h
95813	95814	95815	95816	95817

NAOS SQUARE MPR s

Code	Type
95850	NAOS SQUARE MPR 5200/840 s

Diffuser with multilayer micropyramid optics, silver colour (s)

M1h	M3h	DALI	DALI M1h	DALI M3h
95853	95854	95855	95856	95857

Example of type marking: 95856 = NAOS SQUARE MPR 5200/840 **DALI M1h s**

LEGEND

s – silver colour RAL 9006

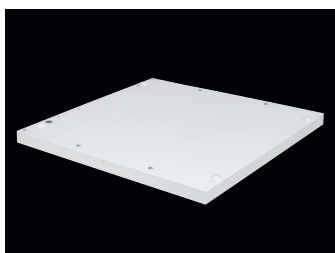
DALI – version with electronic and digitally dimmed ballast module operated via DALI protocol

M1h – emergency back-up source with operating time of 1 hour (SA) for both permanent and emergency illumination

Batteries must be formatted before their putting into operation. Assembly instructions must be observed at installation.

LIGHT FITTING ATTACHMENT

- Directly to a ceiling or a wall with the use of screws
- By suspending to a ceiling with the use of wire-cord suspensions
- Installation into $600 \times 600\text{mm}$ grid lower ceiling



LIGHT FITTING DETAILED VIEW

NAOS SQUARE MPR

