

NAOS SQUARE



... indoor, square, metal.

USE

Advanced lamp with low profile of total height of 34 mm only.

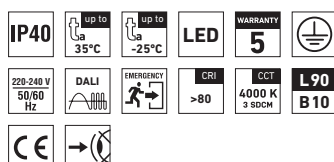
Body of the lamp is made of painted metal sheet and it is supplemented with acryl diffuser sandblasted on both sides.

The light fitting is suitable for offices, hallways, school interiors, libraries, lecture rooms, sanitary rooms, hospitals and passenger terminals.

ADVANTAGES

- Light fitting protection **IP40**
- Maximum ambient temperature up to **t_a = 35 °C**
- Lifetime: 50,000 hours / L90B10
- Diffuser: acryl (PMMA) sandblasted on both sides
- Body: steel sheet, white (RAL 9003) or silver (RAL 9006) colour
- Up to 45 % lower electricity consumption when compared to tubes T5
- In DALI version possibility of constant luminous flux for whole lifetime (CLO)

- Standard model - CRI > 80: 4000 K
- At request CRI > 80: 3000 K, 5000 K, 6500 K, CRI > 90: 3000 K, 4000 K, 5000 K, 6500 K
- It can be delivered in dimmable or emergency version
- Certification: ESČ



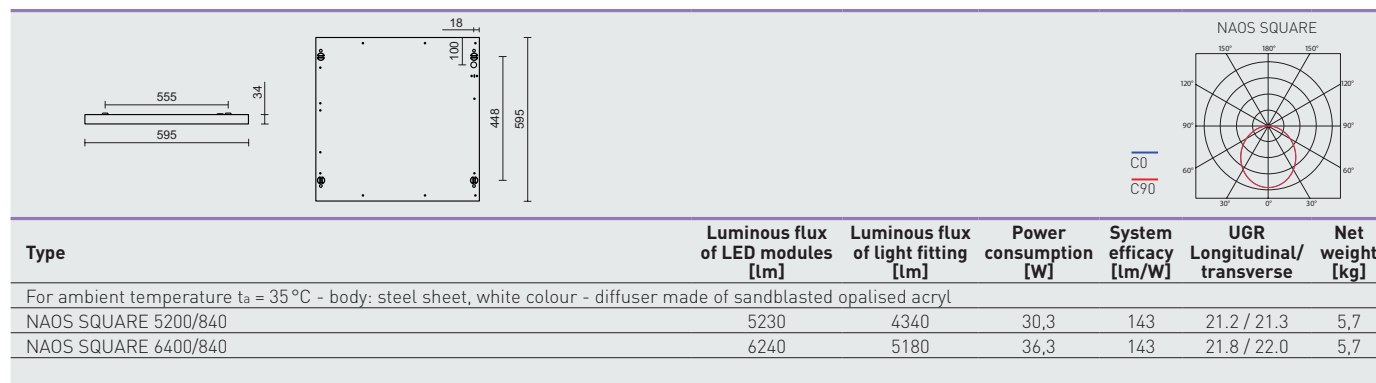
NAOS SQUARE



TECHNICAL DESCRIPTION

- Light fitting protection: IP40
- Maximum ambient temperature: $t_a = 35^\circ\text{C}$, Maximum ambient temperature: $t_a = 0-25^\circ\text{C}$ (version with emergency back-up source for 1 or 3 hours; M1h, M3h)
- Maximum system efficacy: 143 lm/W
- The watt and lumen values can vary by $\pm 7,5\%$
- Standard model - CRI > 80: 4000 K
- MacAdam = 3 SDCM
- Lifetime: 50,000 hours / L90B10
- Diffuser: acryl (PMMA) sandblasted on both sides

- Body: steel sheet, white (RAL 9003) or silver (RAL 9006) colour
- Cable gland: rubber (SBS), white
- Terminal block: screwless, five-pole
- Securing of the cover: by the means of magnets
- Electric equipment: LED modules, current driver or current driver DALI



95710 NAOS SQUARE 5200/840 = suitable replacement surface mounted or recessed fluorescent light fittings 4×18W a 4×14W

NAOS SQUARE

Code	Type
95710	NAOS SQUARE 5200/840
95720	NAOS SQUARE 6400/840

Diffuser made from sandblasted opalised acryl, white colour

M1h	M3h	DALI	DALI M1h	DALI M3h
95713	95714	95715	95716	95717
95723	95724	95725	95726	95727

NAOS SQUARE s

Code	Type
95750	NAOS SQUARE 5200/840 s
95760	NAOS SQUARE 6400/840 s

Diffuser made from sandblasted opalised acryl, silver colour (s)

M1h	M3h	DALI	DALI M1h	DALI M3h
95753	95754	95755	95756	95757
95763	95764	95765	95766	95767

Example of type marking: 95756 = NAOS SQUARE 5200/840 DALI M1h s

LEGEND

s – silver colour RAL 9006

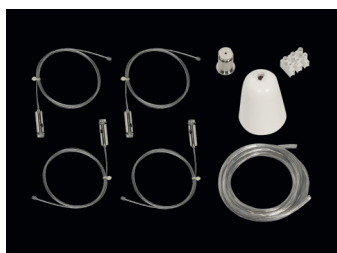
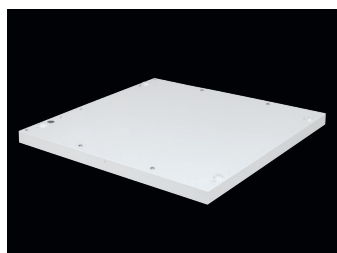
DALI – version with electronic and digitally dimmed ballast module operated via DALI protocol

M1h – emergency back-up source with operating time of 1 hour (SA) for both permanent and emergency illumination

Batteries must be formatted before their putting into operation. Assembly instructions must be observed at installation.

LIGHT FITTING ATTACHMENT

- Directly to a ceiling or a wall with the use of screws
- By suspending to a ceiling with the use of wire-cord suspensions
- Installation into 600 × 600mm grid lower ceiling



LIGHT FITTING DETAILED VIEW NAOS SQUARE

