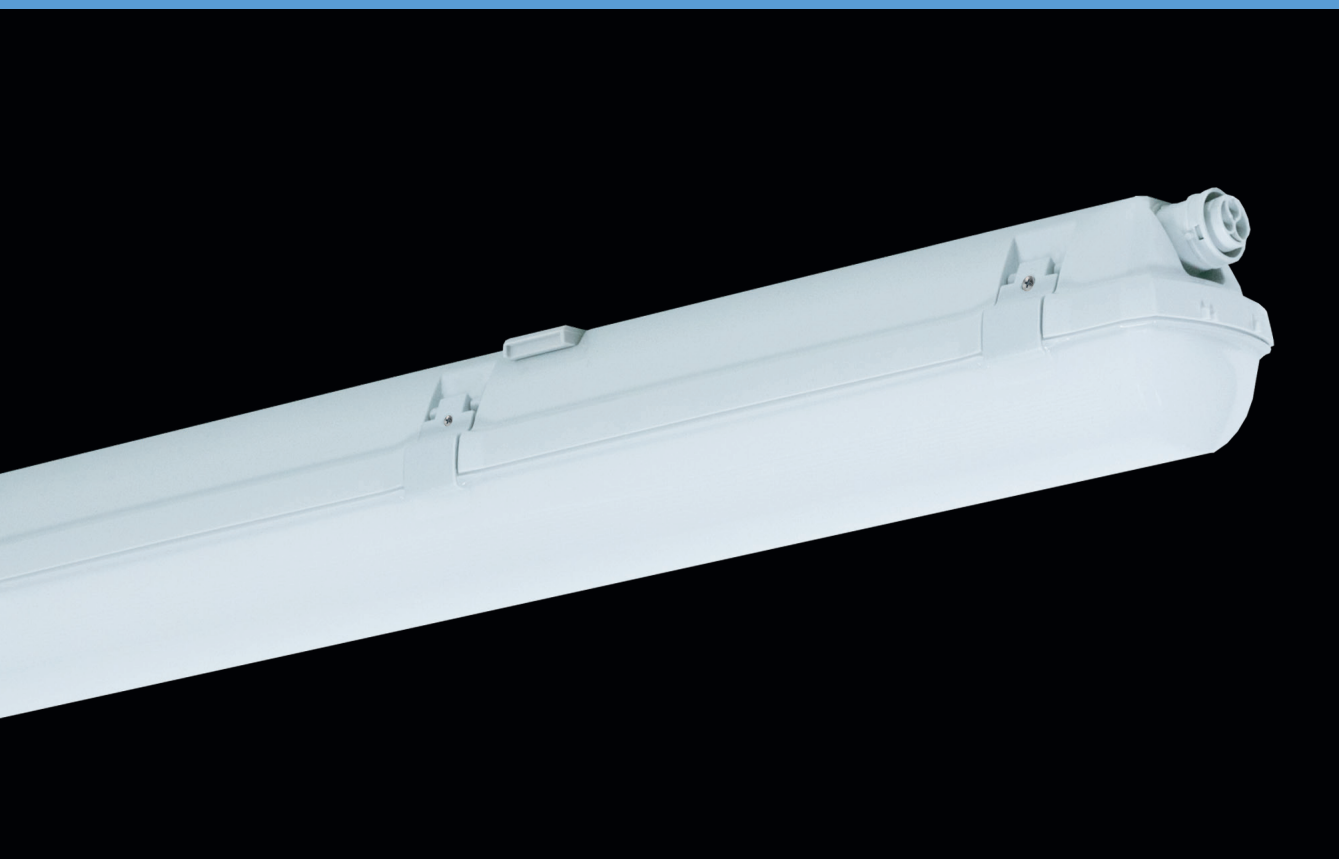


PRIMA LED CLASS II



... with Class II insulation.

USE

Light fitting is suitable for **industrial, warehouse and agricultural buildings, sports premises, transport terminals, railway vehicle repair shops, platforms, traction substations, depots, parking lots and garages, workshops and laboratories** without explosion hazard.

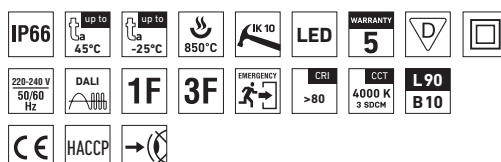
The light fitting resists dust, humidity and spouting water. The body and the diffuser made of PC material have high mechanical resistance against impact and deformation.

Emissions in the environment of use may reduce the usability of the plastics.

ADVANTAGES

- Light fitting protection **IP66**
- Maximum ambient temperature up to **$t_a = 45^\circ\text{C}$**
- Lifetime: 50,000 hours / L90B10
- Diffuser: translucent polycarbonate (PC) = high mechanical resistance
- Body: grey polycarbonate (PC) = high mechanical resistance
- Up to 45 % lower electricity consumption when compared to tubes T5
- In DALI version possibility of constant luminous flux for whole lifetime (CLO)
- Constant luminous flux even in ambient temperature of -25°C

- Standard model - CRI > 80: 4000 K
- At request CRI > 80: 3000 K, 5000 K, 6500 K, CRI > 90: 3000 K, 4000 K, 5000 K, 6500 K
- It can be delivered in dimmable or emergency version
- Available in ABS chemical resistant version
- Through-wiring of up to 6 wires at body (1.4ft and 1.5ft)

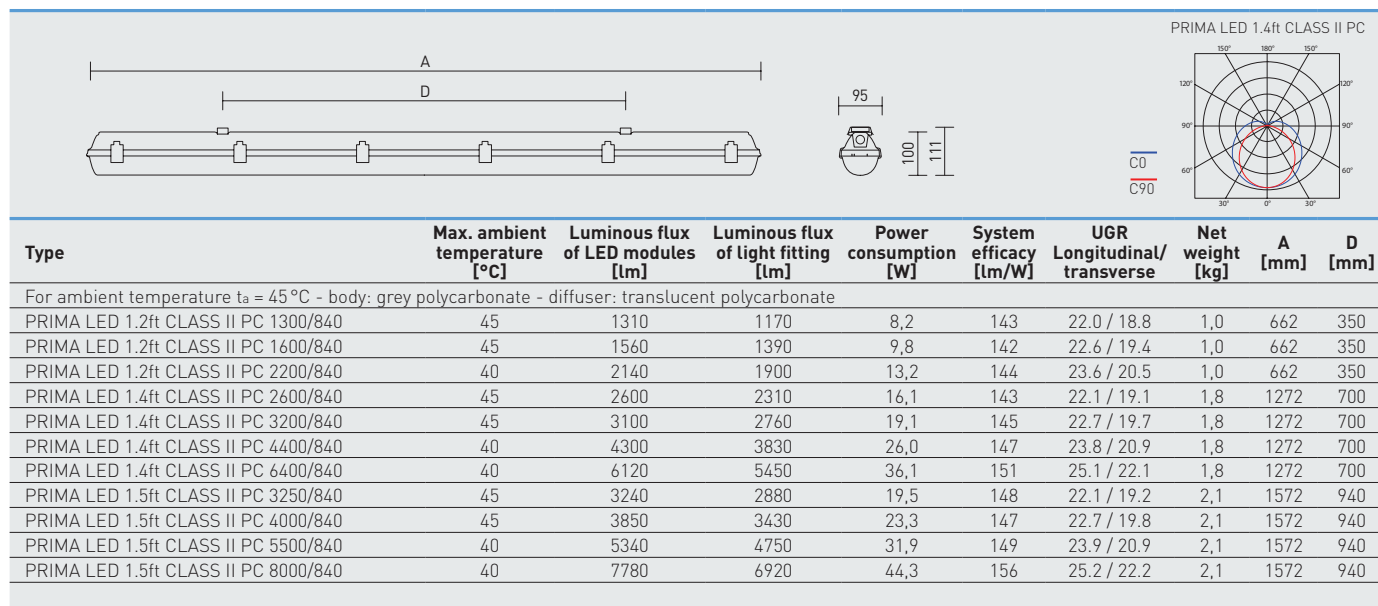


PRIMA LED CLASS II PC, PCc



TECHNICAL DESCRIPTION

- Light fitting protection: IP66
- Maximum ambient temperature: $t_a = 45^\circ\text{C}$, Maximum ambient temperature: $t_a = 0-25^\circ\text{C}$ (version with emergency back-up source for 1 or 3 hours; M1h, M3h)
- Maximum system efficacy: 156 lm/W
- AWEX emergency light module generates a luminous flux of 440 lm
- The watt and lumen values can vary by $\pm 7,5\%$
- Standard model - CRI > 80: 4000 K
- MacAdam = 3 SDCM
- Lifetime: 50,000 hours / L90B10
- Diffuser: translucent polycarbonate (PC), UV stable, impact-resistant
- Body: grey polycarbonate (PC), UV stable, impact-resistant
- Reflector: steel sheet, white colour (RAL 9003)
- Clips: polyamide + 15 % glass fibre or stainless steel + polyamide
- Sealing: polyurethane (PUR), foamed body groove
- Cable glands: screwed PG 13.5, or rubber (SBS)
- Distance part: polyamide + 10 % glass fibre
- Terminal block: **Connectors with 2, 4 or 6 poles, wire section 1.5 or 2.5 mm**
- Installation: package contains stainless hooks, stainless brackets and a connector's counterpart
- Electric equipment: LED modules, current driver or current driver DALI



71210 PRIMA LED 1.2ft CLASS II PC 1600/840 = suitable replacement for T8 fl. tube light fitting PRIMA 118 - 1x18 W
 71240 PRIMA LED 1.4ft CLASS II PC 3200/840 = suitable replacement for T8 fl. tube light fitting PRIMA 136 - 1x36 W
 71260 PRIMA LED 1.4ft CLASS II PC 6400/840 = suitable replacement for T8 fl. tube light fitting PRIMA 236 - 2x36 W
 71280 PRIMA LED 1.5ft CLASS II PC 4000/840 = suitable replacement for T8 fl. tube light fitting PRIMA 158 - 1x58 W
 71300 PRIMA LED 1.5ft CLASS II PC 8000/840 = suitable replacement for T8 fl. tube light fitting PRIMA 258 - 2x58 W

PRIMA LED CLASS II PC

Non-dimmable driver - plastic clips

Code	Type	1F	3F	M1h	M3h	3F M1h	3F M3h
71200	PRIMA LED 1.2ft CLASS II PC 1300/840	x	x	x	x	x	x
71210	PRIMA LED 1.2ft CLASS II PC 1600/840	x	x	x	x	x	x
71220	PRIMA LED 1.2ft CLASS II PC 2200/840	x	x	x	x	x	x
71230	PRIMA LED 1.4ft CLASS II PC 2600/840	71231	71233	71234	71235	71236	71237
71240	PRIMA LED 1.4ft CLASS II PC 3200/840	71241	71243	71244	71245	71246	71247
71250	PRIMA LED 1.4ft CLASS II PC 4400/840	71251	71253	71254	71255	71256	71257
71260	PRIMA LED 1.4ft CLASS II PC 6400/840	71261	71263	x	x	x	x
71270	PRIMA LED 1.5ft CLASS II PC 3250/840	71271	71273	71274	71275	71276	71277
71280	PRIMA LED 1.5ft CLASS II PC 4000/840	71281	71283	71284	71285	71286	71287
71290	PRIMA LED 1.5ft CLASS II PC 5500/840	71291	71293	71294	71295	71296	71297
71300	PRIMA LED 1.5ft CLASS II PC 8000/840	71301	71303	x	x	x	x

PRIMA LED CLASS II PCc

Non-dimmable driver - stainless clips (c)

Code	Type	1F	3F	M1h	M3h	3F M1h	3F M3h
71310	PRIMA LED 1.2ft CLASS II PCc 1300/840	x	x	x	x	x	x
71320	PRIMA LED 1.2ft CLASS II PCc 1600/840	x	x	x	x	x	x
71330	PRIMA LED 1.2ft CLASS II PCc 2200/840	x	x	x	x	x	x
71340	PRIMA LED 1.4ft CLASS II PCc 2600/840	71341	71343	71344	71345	71346	71347
71350	PRIMA LED 1.4ft CLASS II PCc 3200/840	71351	71353	71354	71355	71356	71357
71360	PRIMA LED 1.4ft CLASS II PCc 4400/840	71361	71363	71364	71365	71366	71367
71370	PRIMA LED 1.4ft CLASS II PCc 6400/840	71371	71373	x	x	x	x
71380	PRIMA LED 1.5ft CLASS II PCc 3250/840	71381	71383	71384	71385	71386	71387
71390	PRIMA LED 1.5ft CLASS II PCc 4000/840	71391	71393	71394	71395	71396	71397
71400	PRIMA LED 1.5ft CLASS II PCc 5500/840	71401	71403	71404	71405	71406	71407
71410	PRIMA LED 1.5ft CLASS II PCc 8000/840	71411	71413	x	x	x	x

Example of type marking: 71346 = PRIMA LED 1.4ft CLASS II PCc 2600/840 **3F M1h**

PRIMA LED CLASS II PC DALI

Digital dimmable driver DALI - plastic clips

Code	Type	1F	3F	M1h	M3h	3F M1h	3F M3h
71420	PRIMA LED 1.2ft CLASS II PC 1300/840 DALI	x	x	x	x	x	x
71430	PRIMA LED 1.2ft CLASS II PC 1600/840 DALI	x	x	x	x	x	x
71440	PRIMA LED 1.2ft CLASS II PC 2200/840 DALI	x	x	x	x	x	x
71450	PRIMA LED 1.4ft CLASS II PC 2600/840 DALI	71451	71453	71454	71455	71456	71457
71460	PRIMA LED 1.4ft CLASS II PC 3200/840 DALI	71461	71463	71464	71465	71466	71467
71470	PRIMA LED 1.4ft CLASS II PC 4400/840 DALI	71471	71473	71474	71475	71476	71477
71480	PRIMA LED 1.4ft CLASS II PC 6400/840 DALI	71481	71483	x	x	x	x
71490	PRIMA LED 1.5ft CLASS II PC 3250/840 DALI	71491	71493	71494	71495	71496	71497
71500	PRIMA LED 1.5ft CLASS II PC 4000/840 DALI	71501	71503	71504	71505	71506	71507
71510	PRIMA LED 1.5ft CLASS II PC 5500/840 DALI	71511	71513	71514	71515	71516	71517
71520	PRIMA LED 1.5ft CLASS II PC 8000/840 DALI	71521	71523	x	x	x	x

PRIMA LED CLASS II PCc DALI

Digital dimmable driver DALI - stainless clips (c)

Code	Type	1F	3F	M1h	M3h	3F M1h	3F M3h
71530	PRIMA LED 1.2ft CLASS II PCc 1300/840 DALI	x	x	x	x	x	x
71540	PRIMA LED 1.2ft CLASS II PCc 1600/840 DALI	x	x	x	x	x	x
71550	PRIMA LED 1.2ft CLASS II PCc 2200/840 DALI	x	x	x	x	x	x
71560	PRIMA LED 1.4ft CLASS II PCc 2600/840 DALI	71561	71563	71564	71565	71566	71567
71570	PRIMA LED 1.4ft CLASS II PCc 3200/840 DALI	71571	71573	71574	71575	71576	71577
71580	PRIMA LED 1.4ft CLASS II PCc 4400/840 DALI	71581	71583	71584	71585	71586	71587
71590	PRIMA LED 1.4ft CLASS II PCc 6400/840 DALI	71591	71593	x	x	x	x
71600	PRIMA LED 1.5ft CLASS II PCc 3250/840 DALI	71601	71603	71604	71605	71606	71607
71610	PRIMA LED 1.5ft CLASS II PCc 4000/840 DALI	71611	71613	71614	71615	71616	71617
71620	PRIMA LED 1.5ft CLASS II PCc 5500/840 DALI	71621	71623	71624	71625	71626	71627
71630	PRIMA LED 1.5ft CLASS II PCc 8000/840 DALI	71631	71633	x	x	x	x

Example of type marking: 71623 = PRIMA LED 1.5ft CLASS II PCc 5500/840 DALI **3F**

LEGEND

CLASS II 1F	1-phase 2 core through-wiring in the luminaire
CLASS II 3F	3-phase 4 core through-wiring in the luminaire
M1h	emergency back-up source with 1 hour operating time for maintained emergency illumination
M3h	emergency back-up source with 3 hour operating time for maintained emergency illumination
CLASS II 3F Mxh	3-phase 4 core through-wiring in the luminaire (L3 used for emergency unit unswitched power supply)
DALI	version with digital dimmable driver DALI
CLASS II DALI 1F	1-phase 4 core through-wiring in the luminaire
CLASS II DALI 3F	3-phase 6 core through-wiring in the luminaire
CLASS II DALI 3F Mxh	3-phase 6 core through-wiring in the luminaire (L3 used for emergency unit unswitched power supply)

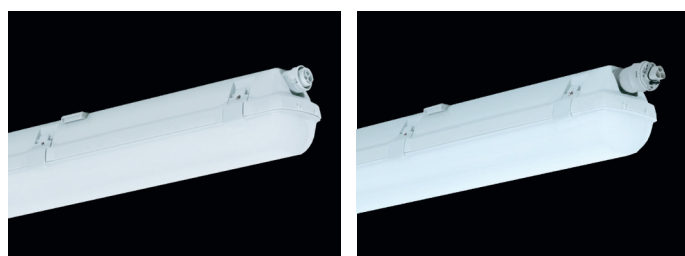
LIGHT FITTING ATTACHMENT

- a) Directly to a ceiling or a wall with the use of screws and stainless brackets
b) Suspension with the use of stainless hooks
c) Attachment with the use of side hangers to the wall - is not included in accessories



LIGHT FITTING DETAILED VIEW

PRIMA LED CLASS II



STUCCHI 37xx

WIELAND