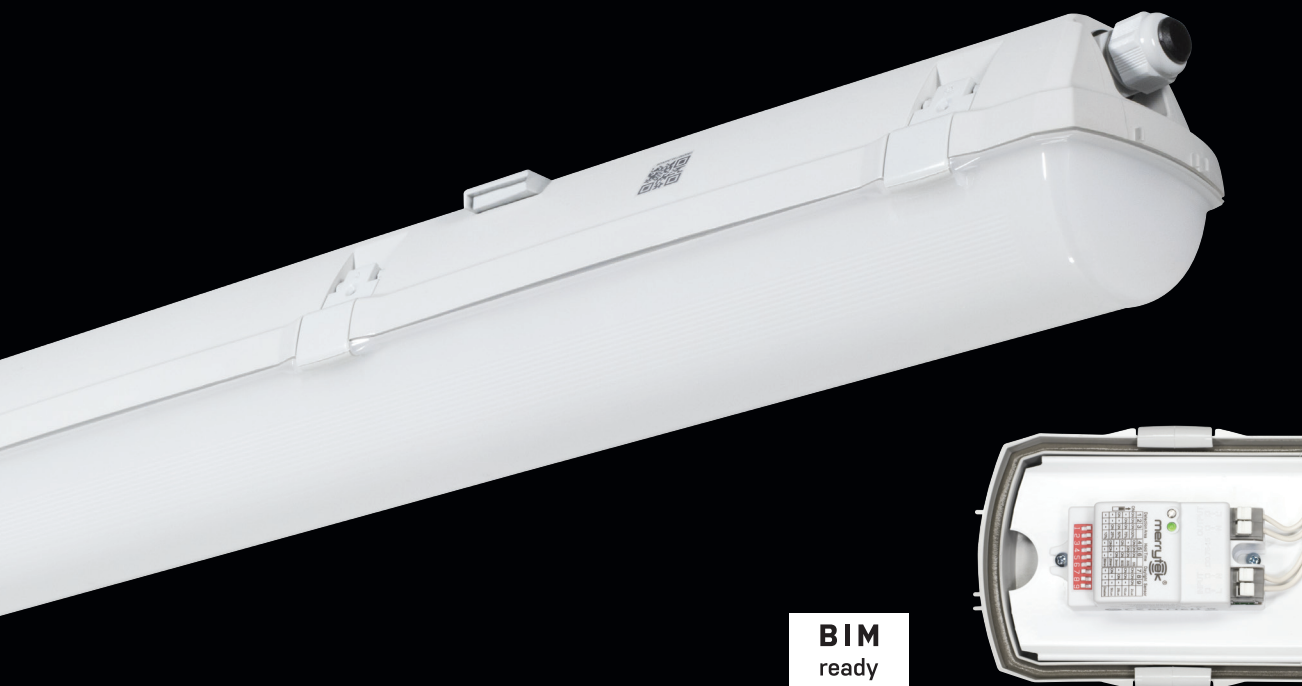


PRIMA LED SNS



... dustproof, waterproof and impact-resistant.

USE

The light fitting is suitable for industrial indoor and outdoor roofed spaces, warehouses, sports areas, workshops, garages, transport terminals, utility structures and laboratories without a danger of explosion of gas, dust and combustible fumes.

The light fitting is resistant to dust, moisture and spouting water. The body and the diffuser made of polycarbonate (PC) have the increased resistance against deformation and impact.

(It is necessary to consider exhalation in the air which can reduce the usability of the plastic at installations in an aggressive environment, see also page 367).

ADVANTAGES

- Light fitting protection IP66
 - Maximum ambient temperature up to **t_a = 45 °C**
 - Lifetime: 50,000 hours / L90B10
 - Diffuser: translucent polycarbonate (PC) = high mechanical resistance
 - Body: grey polycarbonate (PC) = high mechanical resistance
 - Up to 45 % lower electricity consumption when compared to tubes T5
 - Current driver with the possibility of constant luminous flux for whole lifetime (CLO)
 - Constant luminous flux even in ambient temperature of -25 °C
- Standard model - CRI > 80: 4000 K
 - At request CRI > 80: 3000 K, 5000 K, 6500 K, CRI > 90: 3000 K, 4000 K, 5000 K, 6500 K
 - With built-in **microwave motion sensor**
 - The possibility of setting the sensor using the DIP switch
 - It can be delivered in dimmable or emergency version
 - Certification: HACCP

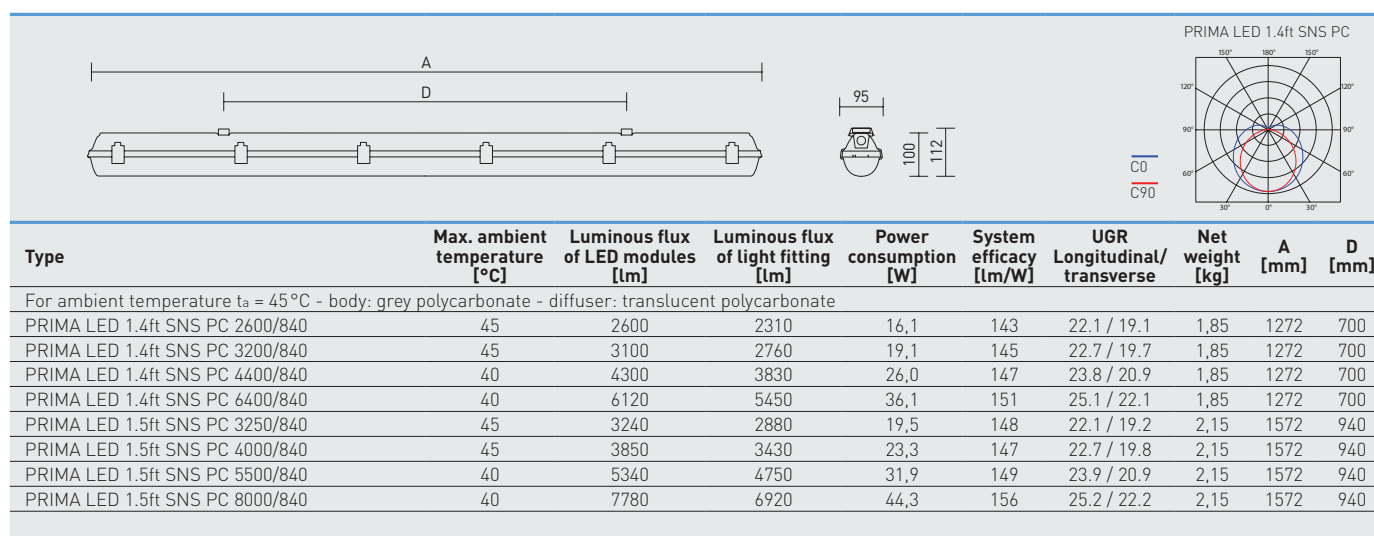


PRIMA LED SNS PC, PCc



TECHNICAL DESCRIPTION

- Light fitting protection: IP66
- Maximum ambient temperature: $t_a = 45^\circ\text{C}$, Maximum ambient temperature: $t_a = 0-25^\circ\text{C}$ (version with emergency back-up source for 1 or 3 hours; M1h, M3h)
- Maximum system efficacy: 156 lm/W
- The watt and lumen values can vary by $\pm 7,5\%$
- Standard model - CRI > 80: 4000 K
- MacAdam = 3 SDCM
- Lifetime: 50,000 hours / L90B10
- Diffuser: translucent polycarbonate (PC), UV stable, impact-resistant
- Body: grey polycarbonate (PC), UV stable, impact-resistant
- Reflector: steel sheet, white colour (RAL 9003)
- Clips: polyamide + 15 % glass fibre or stainless steel + polyamide
- Sealing: polyurethane (PUR), foamed body groove
- Cable glands: screwed PG 13.5, or rubber (SBS)
- Distance part: polyamide + 10 % glass fibre
- Terminal block: screwless, five-pole (basic version), or screwed
- Installation: package contains stainless hooks and stainless brackets
- Electric equipment: LED modules, current driver or digital dimmable driver DALI
- Motion sensor: 360° range, switch on height 1 – 6 m, time range 5 sec – 30 min, switch-on sensitivity 2 – 50 lux



64050 PRIMA LED 1.4ft SNS PC 3200/840 = suitable replacement for T8 fl. tube light fitting PRIMA 136 – 1 × 36 W
 64460 PRIMA LED 1.4ft SNS PC 6400/840 = suitable replacement for T8 fl. tube light fitting PRIMA 236 – 2 × 36 W
 64080 PRIMA LED 1.5ft SNS PC 4000/840 = suitable replacement for T8 fl. tube light fitting PRIMA 158 – 1 × 58 W
 64490 PRIMA LED 1.5ft SNS PC 8000/840 = suitable replacement for T8 fl. tube light fitting PRIMA 258 – 2 × 58 W

PRIMA LED SNS PC

Code	Type
64040	PRIMA LED 1.4ft SNS PC 2600/840
64050	PRIMA LED 1.4ft SNS PC 3200/840
64060	PRIMA LED 1.4ft SNS PC 4400/840
64460	PRIMA LED 1.4ft SNS PC 6400/840
64070	PRIMA LED 1.5ft SNS PC 3250/840
64080	PRIMA LED 1.5ft SNS PC 4000/840
64090	PRIMA LED 1.5ft SNS PC 5500/840
64490	PRIMA LED 1.5ft SNS PC 8000/840

Non-dimmable driver - plastic clips

1F	3F	M1h	M3h	3F M1h	3F M3h
64140	64340	64044	64045	64344	64345
64150	64350	64054	64055	64354	64355
64160	64360	64064	64065	64364	64365
64461	64462	x	x	x	x
64170	64370	64074	64075	64374	64375
64180	64380	64084	64085	64384	64385
64190	64390	64094	64095	64394	64395
64491	64492	x	x	x	x

PRIMA LED SNS PCc

Code	Type
64240	PRIMA LED 1.4ft SNS PCc 2600/840
64250	PRIMA LED 1.4ft SNS PCc 3200/840
64260	PRIMA LED 1.4ft SNS PCc 4400/840
64760	PRIMA LED 1.4ft SNS PCc 6400/840
64270	PRIMA LED 1.5ft SNS PCc 3250/840
64280	PRIMA LED 1.5ft SNS PCc 4000/840
64290	PRIMA LED 1.5ft SNS PCc 5500/840
64790	PRIMA LED 1.5ft SNS PCc 8000/840

Non-dimmable driver - stainless clips (c)

1F	3F	M1h	M3h	3F M1h	3F M3h
64540	64640	64244	64245	64644	64645
64550	64650	64254	64255	64654	64655
64560	64660	64264	64265	64664	64665
64761	64762	x	x	x	x
64570	64670	64274	64275	64674	64675
64580	64680	64284	64285	64684	64685
64590	64690	64294	64295	64694	64695
64791	64792	x	x	x	x

Example of type marking: 64644 = PRIMA LED 1.4ft SNS PC 2600/840 **3F M1h**

PRIMA LED SNS PC CORRIDOR

Code	Type
64043	PRIMA LED 1.4ft SNS PC 2600/840 CORRIDOR
64053	PRIMA LED 1.4ft SNS PC 3200/840 CORRIDOR
64063	PRIMA LED 1.4ft SNS PC 4400/840 CORRIDOR
64073	PRIMA LED 1.5ft SNS PC 3250/840 CORRIDOR
64083	PRIMA LED 1.5ft SNS PC 4000/840 CORRIDOR
64093	PRIMA LED 1.5ft SNS PC 5500/840 CORRIDOR

Digital dimmable driver - plastic clips

1F	3F	M1h	M3h	3F M1h	3F M3h
64143	64343	64047	x	64347	x
64153	64353	64057	x	64357	x
64163	64363	64067	x	64367	x
64173	64373	64077	64078	64377	64378
64183	64383	64087	64088	64387	64388
64193	64393	64097	64098	64397	64398

PRIMA LED SNS PCc CORRIDOR

Code	Type
64243	PRIMA LED 1.4ft SNS PCc 2600/840 CORRIDOR
64253	PRIMA LED 1.4ft SNS PCc 3200/840 CORRIDOR
64263	PRIMA LED 1.4ft SNS PCc 4400/840 CORRIDOR
64273	PRIMA LED 1.5ft SNS PCc 3250/840 CORRIDOR
64283	PRIMA LED 1.5ft SNS PCc 4000/840 CORRIDOR
64293	PRIMA LED 1.5ft SNS PCc 5500/840 CORRIDOR

Digital dimmable driver - stainless clips (c)

1F	3F	M1h	M3h	3F M1h	3F M3h
64543	64643	64247	x	64647	x
64553	64653	64257	x	64657	x
64563	64663	64267	x	64667	x
64573	64673	64277	64278	64677	64678
64583	64683	64287	64288	64687	64688
64593	64693	64297	64298	64697	64698

Example of type marking: 64693 = PRIMA LED 1.5ft SNS PCc 5500/840 CORRIDOR **3F**

LEGEND

SNS 1F	1-phase 3 core through-wiring in the luminaire for connection of max. 5 slave luminaires
SNS 3F	3-phase 5 core through-wiring in the luminaire for connection of max. 5 slave luminaires (sensor connected to L3)
M1h	emergency back-up source with 1 hour operating time for maintained emergency illumination
M3h	emergency back-up source with 3 hour operating time for maintained emergency illumination
SNS 3F Mxh	3-phase 5 core through-wiring in the luminaire for connection of max. 5 slave luminaires (sensor and emergency unit connected to L3)
CORRIDOR	version with digital dimmable driver DALI and set corridor function
CORRIDOR 1F	1-phase 5 core through-wiring in the luminaire for connection of max. 20 luminaires
CORRIDOR 3F	3-phase 7 core through-wiring in the luminaire for connection of max. 20 luminaires (sensor connected to L3)
CORRIDOR 3F Mxh	3-phase 7 core through-wiring in the luminaire for connection of max. 20 luminaires (sensor and emergency unit connected to L3)

LIGHT FITTING ATTACHMENT

- a) Directly to a ceiling or a wall with the use of screws and stainless brackets
b) Suspension with the use of stainless hooks
c) Attachment with the use of side hangers to the wall - is not included in accessories



LIGHT FITTING DETAILED VIEW

PRIMA LED SNS

