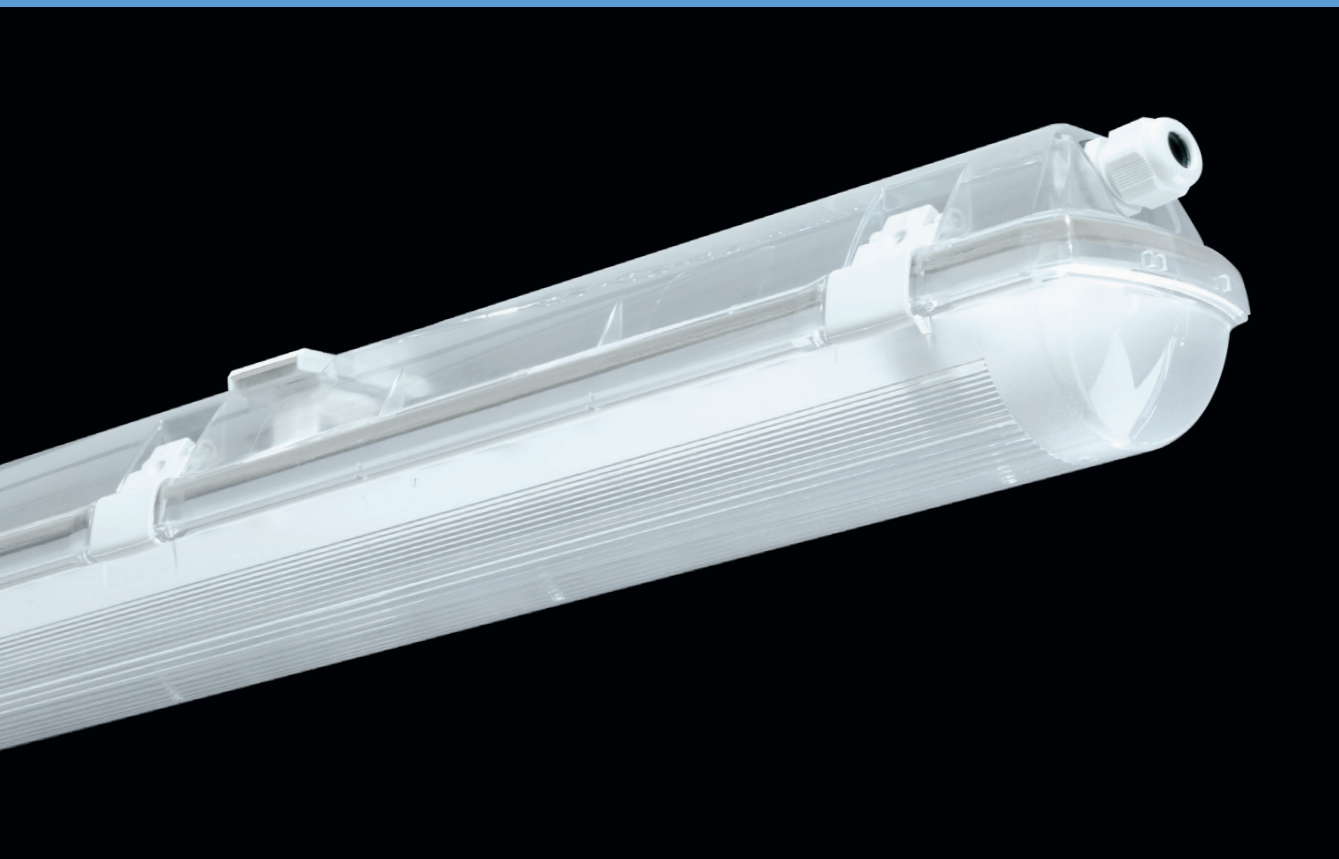


PRIMA LED TRS



... for direct and indirect illumination.

USE

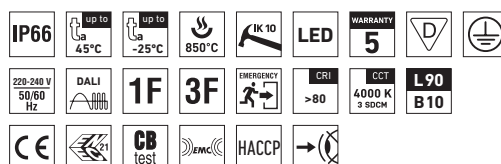
This luminaire, which features a clear base, is a perfect source of both direct and indirect illumination for spaces with low ceilings. The light fitting is suitable for industrial indoor and outdoor roofed spaces, warehouses, sports areas, workshops, garages, transport terminals, utility structures and laboratories without a danger of explosion of gas, dust and combustible fumes.

The light fitting is resistant to dust, moisture and spouting water. The body and the diffuser made of polycarbonate (PC) have the increased resistance against deformation and impact.

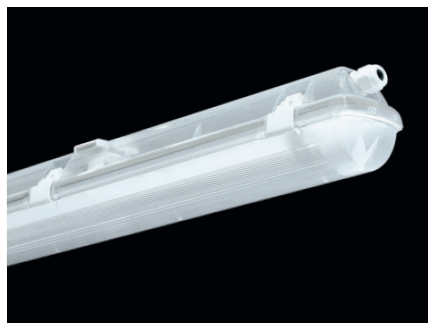
(It is necessary to consider exhalation in the air which can reduce the usability of the plastic at installations in an aggressive environment.

ADVANTAGES

- Light fitting protection **IP66**
- Maximum ambient temperature up to **t_a = 45 °C**
- Lifetime: 50,000 hours / L90B10
- Diffuser: clear polycarbonate (PC) = high mechanical resistance
- Body: clear polycarbonate (PC) = high mechanical resistance
- Up to 45 % lower electricity consumption when compared to tubes T5
- In DALI version possibility of constant luminous flux for whole lifetime (CLO)
- Constant luminous flux even in ambient temperature of -25 °C
- Standard model - CRI > 80: 4000 K
- At request CRI > 80: 3000 K, 5000 K, 6500 K, CRI > 90: 3000 K, 4000 K, 5000 K, 6500 K
- It can be delivered in dimmable version
- It can be delivered in Tunable White version at request
- Certification: ESČ, CB, HACCP

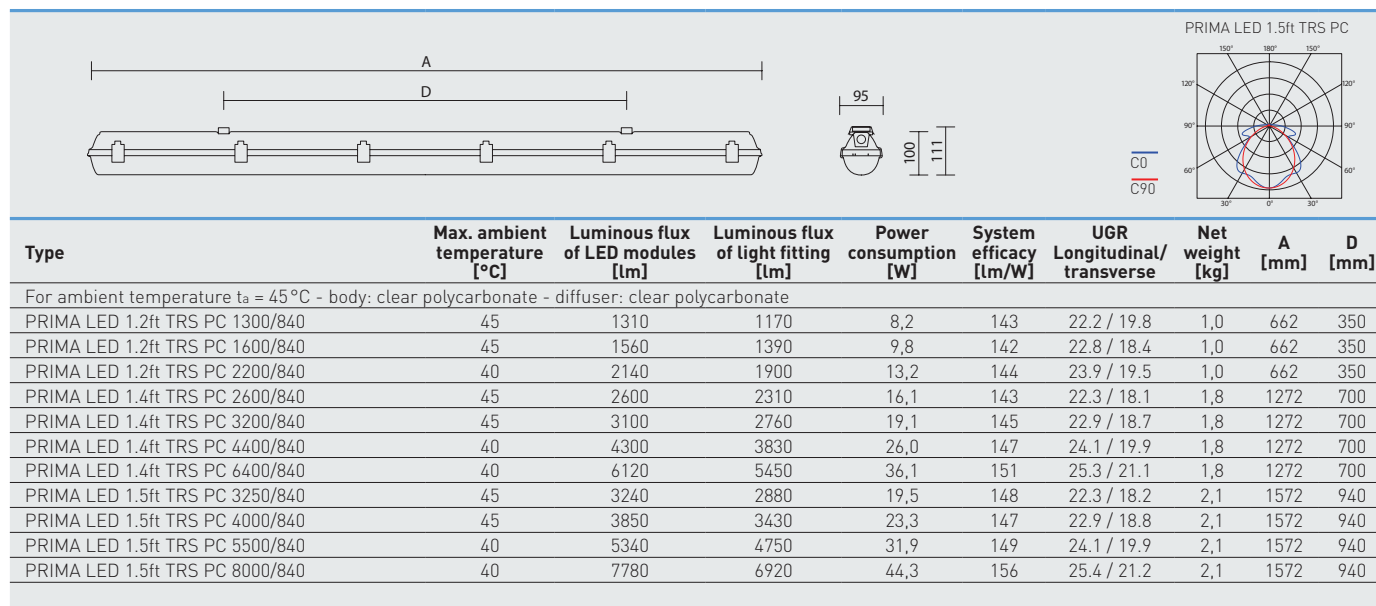


PRIMA LED TRS PC, PCc



TECHNICAL DESCRIPTION

- Light fitting protection: IP66
- Maximum ambient temperature: $t_a = 45^\circ\text{C}$,
- Maximum system efficacy: 156 lm/W
- The watt and lumen values can vary by $\pm 7,5\%$
- Standard model - CRI > 80: 4000 K
- MacAdam = 3 SDCM
- Lifetime: 50,000 hours / L90B10
- Diffuser: clear polycarbonate (PC) = high mechanical resistance
- Body: clear polycarbonate (PC), UV stable, impact-resistant
- Reflector: steel sheet, white colour (RAL 9003) modified for indirect illumination
- Clips: polyamide + 15 % glass fibre or stainless steel + polyamide
- Sealing: polyurethane (PUR), foamed body groove
- Cable glands: screwed PG 13.5, or rubber (SBS)
- Distance part: polyamide + 10 % glass fibre
- Terminal block: screwless, three-pole (basic version), or screwed
- Installation: package contains stainless hooks and stainless brackets
- Electric equipment: LED modules, current driver or current driver DALI



88010 PRIMA LED 1.2ft TRS PC 1600/840 = suitable replacement for T8 fl. tube light fitting PRIMA 118 - 1x18 W
 88040 PRIMA LED 1.4ft TRS PC 3200/840 = suitable replacement for T8 fl. tube light fitting PRIMA 136 - 1x36 W
 88060 PRIMA LED 1.4ft TRS PC 6400/840 = suitable replacement for T8 fl. tube light fitting PRIMA 236 - 2x36 W
 88080 PRIMA LED 1.5ft TRS PC 4000/840 = suitable replacement for T8 fl. tube light fitting PRIMA 158 - 1x58 W
 88100 PRIMA LED 1.5ft TRS PC 8000/840 = suitable replacement for T8 fl. tube light fitting PRIMA 258 - 2x58 W

PRIMA LED TRS PC

Code Type		Plastic clips				
		1F	3F	DALI	DALI 1F	DALI 3F
88000	PRIMA LED 1.2ft TRS PC 1300/840	x	x	88220	x	x
88010	PRIMA LED 1.2ft TRS PC 1600/840	x	x	88230	x	x
88020	PRIMA LED 1.2ft TRS PC 2200/840	x	x	88240	x	x
88030	PRIMA LED 1.4ft TRS PC 2600/840	88031	88033	88250	88251	88253
88040	PRIMA LED 1.4ft TRS PC 3200/840	88041	88043	88260	88261	88263
88050	PRIMA LED 1.4ft TRS PC 4400/840	88051	88053	88270	88271	88273
88060	PRIMA LED 1.4ft TRS PC 6400/840	88061	88063	88280	88281	88283
88070	PRIMA LED 1.5ft TRS PC 3250/840	88071	88073	88290	88291	88293
88080	PRIMA LED 1.5ft TRS PC 4000/840	88081	88083	88300	88301	88303
88090	PRIMA LED 1.5ft TRS PC 5500/840	88091	88093	88310	88311	88313
88100	PRIMA LED 1.5ft TRS PC 8000/840	88101	88103	88320	88321	88323

PRIMA LED TRS PCc

Code Type		Stainless clips [c]				
		1F	3F	DALI	DALI 1F	DALI 3F
88110	PRIMA LED 1.2ft TRS PCc 1300/840	x	x	88330	x	x
88120	PRIMA LED 1.2ft TRS PCc 1600/840	x	x	88340	x	x
88130	PRIMA LED 1.2ft TRS PCc 2200/840	x	x	88350	x	x
88140	PRIMA LED 1.4ft TRS PCc 2600/840	88141	88143	88360	88361	88363
88150	PRIMA LED 1.4ft TRS PCc 3200/840	88151	88153	88370	88371	88373
88160	PRIMA LED 1.4ft TRS PCc 4400/840	88161	88163	88380	88381	88383
88170	PRIMA LED 1.4ft TRS PCc 6400/840	88171	88173	88390	88391	88393
88180	PRIMA LED 1.5ft TRS PCc 3250/840	88181	88183	88400	88401	88403
88190	PRIMA LED 1.5ft TRS PCc 4000/840	88191	88193	88410	88411	88413
88200	PRIMA LED 1.5ft TRS PCc 5500/840	88201	88203	88420	88421	88423
88210	PRIMA LED 1.5ft TRS PCc 8000/840	88211	88213	88430	88431	88433

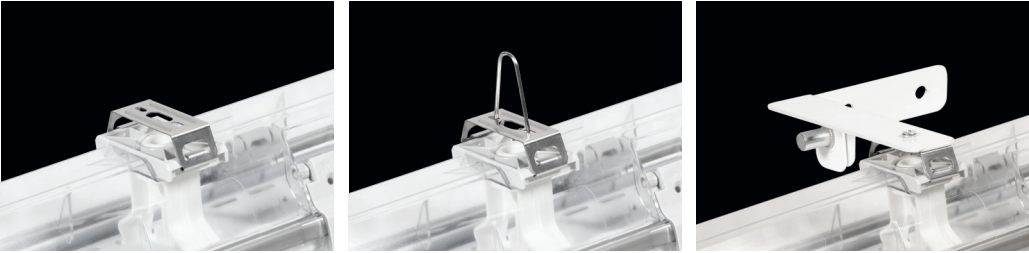
Example of type marking: 88363 = PRIMA LED 1.4ft TRS PCc 2600/840 DALI 3F

LEGEND

1F	1-phase 3 core through-wiring in the luminaire	DALI	version with digital dimmable driver DALI
3F	3-phase 5 core through-wiring in the luminaire	DALI 1F	1-phase 5 core through-wiring in the luminaire
M1h	emergency back-up source with 1 hour operating time for maintained emergency illumination	DALI 3F	3-phase 7 core through-wiring in the luminaire
M3h	emergency back-up source with 3 hour operating time for maintained emergency illumination	DALI 3F Mxh	3-phase 7 core through-wiring in the luminaire (L3 used for emergency unit unswitched power supply)
3F Mxh	3-phase 5 core through-wiring in the luminaire (L3 used for emergency unit unswitched power supply)		

LIGHT FITTING ATTACHMENT

- a) Directly to a ceiling or a wall with the use of screws and stainless brackets
- b) Suspension with the use of stainless hooks
- c) Attachment with the use of side hangers to the wall - is not included in accessories



LIGHT FITTING DETAILED VIEW

