

PRIMA VALUE ABS

NEW



... dustproof, waterproof and chemically resistant.

USE

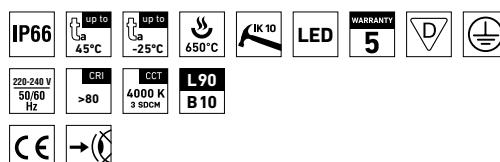
In addition to indoor spaces, it is designed for agricultural buildings and other spaces with chemically aggressive environments due to ammonia fumes, lye fumes, alkali and hot water (hydrolysis).

The fitting is primarily intended for large **agricultural premises and industrial halls such as farms, stables, production plants and warehouses, car washes and laboratories** with no explosion hazard.

The fitting's base and diffuser are made of ABS resulting in their **exceptional chemical resistance**. Emissions in the environment of use may reduce the usability of the plastics.

ADVANTAGES

- Light fitting protection **IP66**
- High temperature resistance in a range from $t_a = -25^{\circ}\text{C}$ to **$t_a = 45^{\circ}\text{C}$**
- Lifetime: 50 000 hours / L90B10
- High **mechanical resistance IK10**
- **Variable suspension pitch**, optional installation of light fitting even on an existing structure on which the original light fittings were suspended
- Standard model CRI > 80: 4000 K
- Certificates: CE (only)

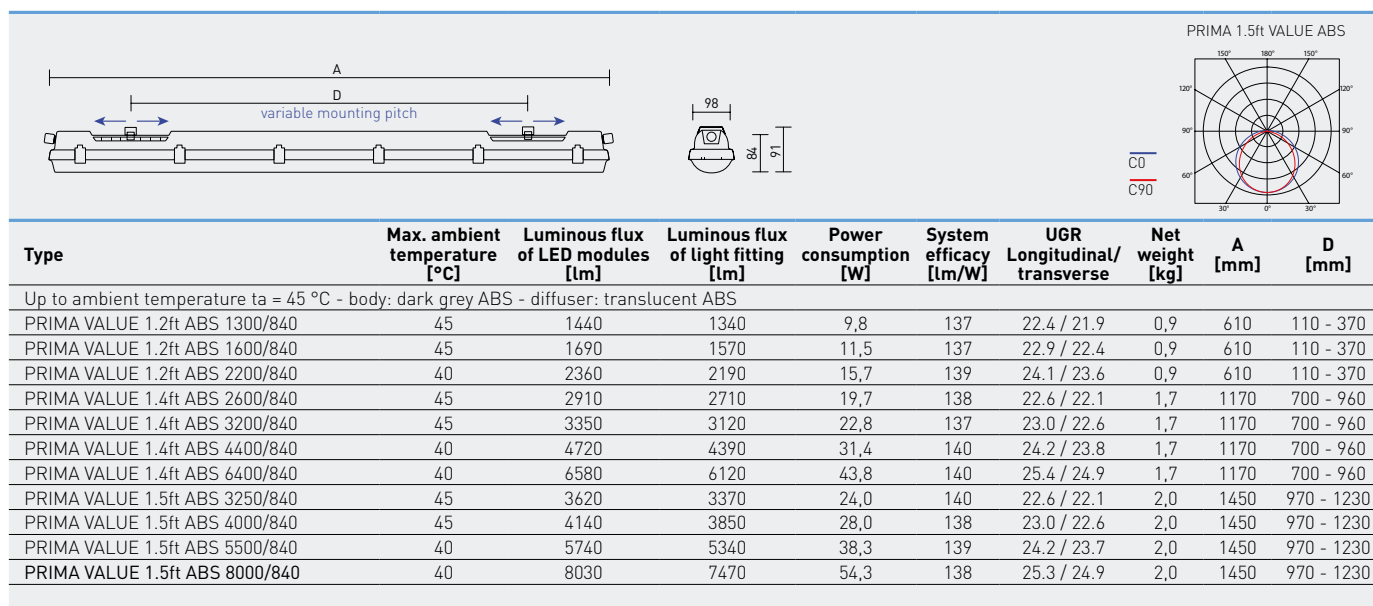


PRIMA VALUE ABS, ABSc



TECHNICAL DESCRIPTION

- Light fitting protection: **IP66**
- Maximum ambient temperature: **ta = 45 °C**
- Lifetime: 50 000 hours / L90B10
- Maximum light fitting efficiency: **140 lm/W**
- **CRI > 80: 4000 K** – standard
- MacAdam = 3 SDCM
- Diffuser: translucent ABS (high chemical resistance, UV stability)
- Body: dark grey ABS (high chemical resistance, UV stability)
- Reflector: steel sheet, white colour (RAL 9003)
- **Mounting clips:** stainless steel, stainless steel hooks included
- Clips: polyamide + 15 % glass fibre or stainless steel + polyamide
- Sealing: polyurethane (PUR), foamed body groove
- Cable glands: rubber (SBS)
- Terminal block: screwless, three-pole (basic version), or screwed
- The values stated for power consumption and luminous flux are in a tolerance of $\pm 7.5 \%$



PRIMA VALUE ABS

Code	Type
106751	PRIMA VALUE 1.2ft ABS 1300/840
106752	PRIMA VALUE 1.2ft ABS 1600/840
106753	PRIMA VALUE 1.2ft ABS 2200/840
106754	PRIMA VALUE 1.4ft ABS 2600/840
106755	PRIMA VALUE 1.4ft ABS 3200/840
106756	PRIMA VALUE 1.4ft ABS 4400/840
106757	PRIMA VALUE 1.4ft ABS 6400/840
106758	PRIMA VALUE 1.5ft ABS 3250/840
106759	PRIMA VALUE 1.5ft ABS 4000/840
106760	PRIMA VALUE 1.5ft ABS 5500/840
106761	PRIMA VALUE 1.5ft ABS 8000/840

Non-dimmable driver - plastic clips

1F	3F	M1h	M3h	3F M1h	3F M3h
x	x	x	x	x	x
x	x	x	x	x	x
x	x	x	x	x	x
x	x	x	x	x	x
x	x	x	x	x	x
x	x	x	x	x	x
x	x	x	x	x	x
x	x	x	x	x	x
x	x	x	x	x	x
x	x	x	x	x	x
x	x	x	x	x	x

PRIMA VALUE ABSc

Code	Type
106762	PRIMA VALUE 1.2ft ABSc 1300/840
106763	PRIMA VALUE 1.2ft ABSc 1600/840
106764	PRIMA VALUE 1.2ft ABSc 2200/840
106765	PRIMA VALUE 1.4ft ABSc 2600/840
106766	PRIMA VALUE 1.4ft ABSc 3200/840
106767	PRIMA VALUE 1.4ft ABSc 4400/840
106768	PRIMA VALUE 1.4ft ABSc 6400/840
106769	PRIMA VALUE 1.5ft ABSc 3250/840
106770	PRIMA VALUE 1.5ft ABSc 4000/840
106771	PRIMA VALUE 1.5ft ABSc 5500/840
106772	PRIMA VALUE 1.5ft ABSc 8000/840

Non-dimmable driver - stainless clips (c)

1F	3F	M1h	M3h	3F M1h	3F M3h
x	x	x	x	x	x
x	x	x	x	x	x
x	x	x	x	x	x
x	x	x	x	x	x
x	x	x	x	x	x
x	x	x	x	x	x
x	x	x	x	x	x
x	x	x	x	x	x
x	x	x	x	x	x
x	x	x	x	x	x
x	x	x	x	x	x

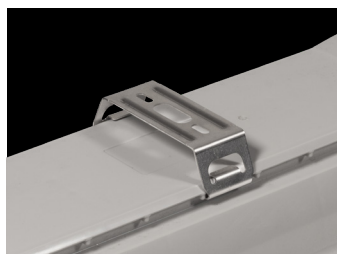
LEGEND

- 1F** 1-phase 3 core through-wiring in the luminaire
3F 3-phase 5 core through-wiring in the luminaire
M1h emergency back-up source with 1 hour operating time for maintained emergency illumination

- M3h** emergency back-up source with 3 hour operating time for maintained emergency illumination
3F Mxh 3-phase 5 core through-wiring in the luminaire (L3 used for emergency unit unswitched power supply)

LIGHT FITTING ATTACHMENT

- a) Directly to a ceiling or a wall with the use of screws and stainless brackets
 b) Suspension with the use of stainless hooks
 c) Attachment with the use of side hangers to the wall - is not included in accessories



LIGHT FITTING DETAILED VIEW

PRIMA VALUE ABS

